



ADAMS COUNTY

COLORADO

Americans with Disabilities Act (ADA) Transition Plan
for Public Right-of-Way in Unincorporated Adams County, Colorado

Original Plan Prepared in 2015

This publication has been prepared by Alfred Benesch & Company in partnership with the Adams County Transportation Department.

All information contained herein is expressly prepared for the sole use of Adams County. Should any portion of this publication be duplicated elsewhere, we request appropriate attribution for such usage.

TABLE OF CONTENTS

Executive Summary..... 1

Transition Plan..... 2

- I. Introduction & Project Background..... 2
- II. ADA Coordinator Role & Responsibilities..... 2
- III. Self-Evaluation..... 3
- IV. Public Involvement..... 4
- V. Public Information Sharing & Grievance Procedure 5
- VI. Design Standards & Specifications 5
- VII. Prioritize and Identify Goals, Strategies, & Schedules 6
- VIII. Monitoring & Updating Plan 8

Appendices

- A. Definitions
- B. County Policy Regarding the ADA
- C. ADA Coordinator Contact Info
- D. Inventory of Public Facilities Assessed
- E. Overview of Assessment Attributes/Parameters
- F. Assessment Findings
- G. Public Involvement Documentation
- H. Complaint & Grievance Procedure
- I. ADA Design and Construction Exception Form
- J. Example Summary of Work Completed towards Transition Plan Implementation

EXECUTIVE SUMMARY

Adams County has prepared this Americans with Disabilities Act (ADA) Transition Plan based upon self-evaluation findings, public outreach, and collaboration with citizens, stakeholders, and partners throughout the County. This plan establishes guidance for addressing and improving accessibility with the County's transportation system. The success of making our transportation system fully accessible will require a coordinated effort by the County and other public sector, private sector, and citizen partners to utilize the guidelines and strategies outlined in this plan. Beyond this plan, Adams County is committed to identifying and enacting opportunities to involve citizens, stakeholders and partners in the implementation of this plan, future updates to the plan, and in policy decisions affecting accessibility with the goal of achieving a better, more accessible, safe, efficient, and sustainable transportation network for all users.

ADAMS COUNTY ADA TRANSITION PLAN

I. Introduction & Project Background

The purpose of this Transition Plan is to identify facilities, guidelines, standards, policies, procedures, and/or practices currently utilized or recommended for use to minimize or eliminate barriers to accessibility within unincorporated Adams County's transportation network. The Plan is a living document to be reviewed and updated periodically.

The Americans with Disabilities Act (ADA), enacted on July 26, 1990, is a civil rights law prohibiting discrimination against individuals on the basis of disability. The ADA consists of five titles outlining protections in the following areas:

- Employment
- State and local government services
- Public accommodations
- Telecommunications
- Miscellaneous Provisions

Title II of ADA pertains to the programs, activities and services public entities provide and extends the application of the ADA to include those provided by all state and local government entities. As such, public transportation services and programs, including those provided by Adams County, must comply with the appropriate sections of the ADA. The ADA requires the ADA Transition Plan be submitted for public review before final approval and adoption.

Title II of ADA, 28 CFR. Part 35 Sec. 35.105 and Sec. 35.150 requires agencies to conduct a self-evaluation of its facilities and develop a Transition Plan to outline how reasonable accessibility improvements for individuals, when needed, will be addressed for facilities, services, programs and activities. This plan includes the findings of the self-evaluation and addresses areas of potential improvement as they pertain to the County's transportation network. This Plan also identifies alternative methods of service delivery permissible under 28 CFR Part 35. I 50(a) and (b). While the ADA requires agencies to provide accessibility to all of its services, it is not required to remove all architectural barriers in all of its facilities.

The Plan also addresses training provided regarding guidelines, standards, policies, procedures, and/or practices to minimize or eliminate barriers to access within Adams County's transportation network.

II. ADA Coordinator Role & Responsibilities

The ADA requires public entities with fifty (50) or more employees to designate one or more individuals as responsible employees for monitoring compliance with and investigating potential violations of the ADA. This individual(s) is the primary point of contact for individuals with disabilities to:

- Request auxiliary aids and services, policy modifications, and other accommodations;
- File a complaint with the County regarding accessibility to County programs, activities and services; and/or
- Address ADA concerns from the general public and from other departments and employees of the public entity.

Appendix C identifies the office, address, and telephone number of the ADA Coordinator(s) for unincorporated Adams County.

III. Self-Evaluation

The County's transportation network is defined as all roadways, sidewalks, on-system shared-use trails, curb ramps, bridges, and other pathways designated for public transportation within the unincorporated limits and ROW of the County. This plan is intended to address accessibility adjacent to or crossing roadways and bridges and accessibility on facilities designated for shared-use or non-vehicular public transportation. The transportation network does not include facilities maintained by or owned by other agencies or private entities within the jurisdictional boundaries of the County.

The County has identified a comprehensive evaluation plan consisting of physical review and measurement of sidewalks and other pedestrian transportation assets adjacent to or crossing roadways and bridges. Specifically, the County has evaluated:

- Curb Ramps
- Sidewalks
- Pedestrian Push Buttons

This evaluation is based on the 2011 Proposed Guidelines for Pedestrian Facilities in the Public Right-of-Way (PROWAG) published by the United States Access Board. The PROWAG document has not been adopted or approved. PROWAG is recognized as a best practice and has been recommended for use by the Federal Highway Administration (FHWA). Compliance or non-compliance as noted herein, is in reference to PROWAG, assuming it is the standard by which accessibility should be measured.

Adams County has a step by step process of how different aspects of accessibility within the County's transportation network are measured and captured.

In determining the compliancy of the existing assets addressed under this plan, the County inventoried each location within the urbanized or sub-urbanized, unincorporated areas of the County in 2015 and documented the following:

- Curb ramp presence, configuration, geometry, grades, and condition
- Detectable warnings panel presence, geometry, contrast, and condition
- Maneuvering area clearance from parallel vehicle traffic
- Landing area presence, configuration, geometry, grades, and condition
- Pedestrian push button presence, location, and accessibility
- Sidewalk presence, width, cross slope, and condition

To be compliant under PROWAG, these features must satisfy established criteria specific to each asset type and purpose. If one criteria of an asset is non-compliant, the asset technically does not meet accessibility requirements even though it may be substantially compliant. Appendix D, E, and F provide information related to the assets surveyed, summary of findings, and detailed findings. This information has been added to the County's GIS database for easy reference and query for internal staff. It should be noted, all information related to the findings is based upon the self-assessment performed in 2015.

The County has approximately 2,900 locations with curb ramps present and constructed to old or non-compliant standards. These locations, while not fully compliant, provide some degree of accessibility. Based upon the self-assessment survey, approximately 2% of the curb ramp locations were fully compliant and provided compliant accessibility. Of the locations assessed, 327 need curb ramps added to provide full accessibility at those locations. Approximately 1,900 locations did not have an acceptable detectable warning panel present.¹ The most prevalent issues with non-compliant curb ramps included improper landing slopes and/or dimensions; improper cross slope or geometry along the ramp or at the curb drop; and/or vertical obstructions in the travel path.

The County has approximately 314 miles of existing sidewalk in the 4,400 sidewalk segments along the transportation network in the unincorporated area. Based on the self-assessment, over 90% of the segments meet running slope requirement and are free of obstructions. The most prevalent issues encountered on non-compliant sidewalk segments included improper width, excessive cross slope at driveway crossings, and/or faulted or separated joints and cracks in the travel path. These issues either singularly or in combination were present on 50-75% of the segments assessed. Approximately 150 sidewalk segments did not provide connectivity to another sidewalk along the transportation network. The majority of these were located in corridors with undeveloped pedestrian features where future development should provide connectivity.

It should be noted for locations with non-compliant curb ramp and/or sidewalk segments, an accessible route may exist within reasonable proximity to some of these locations.

Based on the self-assessment, approximately 75% of the locations with pedestrian push buttons have the buttons mounted properly in accessible locations. For those non-compliant mountings, the most prevalent issues are improper mounting height and/or being mounted in an inaccessible location on the pole.

The ADA requires the County to evaluate current policies and practices to identify and correct any barriers inconsistent with the intent of the law. County representatives have examined current practices and policies related to the ADA and identified gaps in information or training to address as part of this Transition Plan. To further refine and understand accessibility issues needing addressed, the County plans on continuing to meet with staff to review policies, practices, and institutional knowledge regarding the following:

- The nature of programs,
- Forms and methods to advertise and communicate program's services or activities,
- Level of staff training, and
- Accommodations made for individuals with disabilities to access these services.

IV. Public Involvement Used in Transition Plan Development

The self-assessment phase included creating and distributing information about the development of the Plan to encourage the public, advocacy groups, and other stakeholders to provide input and identify areas of concern. In addition to providing traditional means of communication (e.g., paper informational handouts, press releases, targeted communications), a Transition Plan Development webpage was provided within the County's website specifically intended for providing updates and soliciting input. The

¹ NOTE: Detectable warning panels were not introduced as a requirement until 2001 and ramps constructed before 2001 without detectable warning panels are not considered non-compliant until the alterations threshold is met.

primary means of soliciting input for the Plan occurred using a public survey made available in a variety of formats. Appendix G contains a copy of the survey materials and responses received.

A public open house was held at the Adams County Government Conference Center, a fully accessible facility, on August 6, 2015. Notifications for the event followed standard County procedures. The open house included a presentation regarding the Plan goals and an update on the progress to date. The open house also provided an opportunity for interested parties to visit with the Plan development team and provide input on areas of concern.

The input received from the survey and meeting initiatives was evaluated and included in the Plan. A draft version of the Plan was made available to the public and feedback was evaluated and the Plan modified as deemed appropriate by the Plan development team.

A second public open house was held at the same Adams County Government Conference Center facility, on December 8, 2015. Notifications for the event were sent out via standard County public notice procedures, the County's project website, and on the Adams County Facebook page. The open house included a presentation of the Transition Plan draft and findings from the self-evaluation. The open house also provided an opportunity for interested parties to visit with the Plan development team and provide input on the draft Transition Plan.

The Plan will continuously be available by contacting the ADA Coordinator or on the County's website <http://www.adcogov.org> (keyword search "ADA Transition Plan").

V. Public Information Sharing & Grievance Procedure

Adams County will make available to all applicants, participants, beneficiaries, and interested persons information regarding the provisions of the ADA and its applicability to the services, programs or activities of the County.

Adams County is committed to sharing information with the public regarding efforts to improve accessibility within the County's jurisdiction. Information sharing occurs through contact with the ADA Coordinator, the County's webpage on ADA Compliance located at <http://www.adcogov.org> (keyword search "ADA Coordinator"); public meetings and town hall sessions, press releases and other public notifications; and other typical methodologies used by the County and the County's Public Information Office.

Appendix B identifies the process for requesting auxiliary aid or service at public meetings.

Appendix H identifies complaints and grievances procedures and responsibilities towards filing, investigating, and initiating a response.

VI. Design Standards & Specifications

The ADA Standards and Specifications described in this section are intended to apply to all construction within unincorporated Adams County public Right-of-Way required to adhere to County requirements.

The County maintains standard details and construction specifications for transportation assets intended to provide accessibility within the transportation network. The County standards are available at <http://www.adcogov.org> (keyword search "Engineering Road Standards")

For assets constructed not specifically addressed by those details and specifications, the County typically utilizes Colorado Department of Transportation requirements. CDOT standards are available at:

<https://www.codot.gov/business/designsupport/standard-plans/2012-m-standards-plans/2012-m-standards-pdfs/> or <https://www.codot.gov> (keyword search "Standard Plans")

In an effort to account for construction tolerances and to avoid exceeding listed thresholds, designers and construction crews shall use specified slopes and dimensions below the maximum or are above the minimum requirements stated in these standards while maintaining positive drainage.

In alterations to existing facilities, where compliance with applicable standards and specifications is technically infeasible or result in undue burden, the alteration shall conform to standards to the maximum extent possible.

Such exceptions shall be documented on the ADA Design and Construction Exception Form contained in Appendix I and submitted to the ADA Coordinator for documentation.

VII. Prioritize and Identify Goals, Strategies, & Schedules

The overall goal of the Transition Plan is to improve accessibility for all users within unincorporated Adams County. In order to achieve this goal, the County continuously prioritizes the list of identified barriers, identifies strategies and methods to be used to remove barriers achievable within fiscal constraints, provides guidance to County staff and the public on the requirements of the ADA and the County's approach to improve accessibility, develops a realistic schedule based on available budget for the removal of barriers, and identifies potential funding sources and opportunities to remove barriers.

When determining the manner and options for providing accessibility, the County considers many factors including the volume of pedestrian traffic, population density, and the roadway average daily vehicle traffic volume. Considering these factors along with funding challenges, the County anticipates using the following criteria to assist in prioritizing implementation of accessibility improvements as funds become available (in order of priority).

1. Locations where adjacent roadway or infrastructure improvements are taking place
2. Locations in close proximity to public facilities and high pedestrian traffic areas such as schools, hospitals, recreation facilities, parks, etc.
3. Locations in targeted neighborhood zones
4. Locations having a higher degree of non-compliance or more significant barriers to accessibility
5. All other locations not listed above as funding and resources are available

Where possible, out-of-direction travel may be utilized to provide an accessible path, for short or long periods of time until a more direct accessible path can be provided. The County endeavors to improve accessibility annually on a priority basis considering the criteria presented above with an overall goal to have accessible paths in nearly all of these corridors in the next 30-50 years.

Locations identified from the grievance process will be addressed and prioritized on a case-by-case basis.

In general, accessibility improvements along the transportation network addressing curb ramps and sidewalks occur as part of contracted and self-performed construction projects and activities. The County has legal authority to require repairs and to order new sidewalks and accessible ramps be constructed within County Right-of-Way along properties where facilities have degraded or do not exist.

It is anticipated the majority of the accessibility improvement will be performed in conjunction with other projects and activities occurring within the County. The following illustrates the most anticipated efforts and how each may improve accessibility:

New Construction Projects: Work involving creating new public Right-of-Way and/or constructing new pedestrian or transportation features in locations within current or future public Right-of-Way shall provide accessible features in the project that meet current ADA design standards.

New Improvements Projects: Work involving improving existing public Right-of-Way transportation features will provide new or necessary upgrades to existing accessible features in the project area to meet current ADA design standards. Such projects may include road widenings as part of the Capital Improvement Program with associated sidewalk improvements.

Major Maintenance and Rehabilitation Projects: Work involving any alteration or major maintenance activity performed on transportation assets in the existing public Right-of-Way shall provide or upgrade accessible features in, or immediately adjacent to, the project to meet current ADA design standards. Such projects shall include any project requiring pavement reconstruction, major pavement rehabilitation, sidewalk improvements, or the reconstruction of accessibility facilities caused by permittees. Minor or routine maintenance activities (patching, sealing, etc.) will include accessibility improvements when required by the ADA or when such improvements are consistent with the scope of the activity being performed.

Routine Maintenance Projects: Work that is limited to specifically repairing spot areas in the public Right-of-Way directly affecting accessibility shall provide new or necessary upgrades to impacted existing accessible features to meet current ADA design standards.

Training & Education Projects: The County may provide training, formal or informal, to staff, contractors, engineers, developers, partners, and the general public as deemed appropriate for the purpose of educating and training individuals and entities on ADA requirements, construction standards and processes, and County expectations for projects within the transportation network.

Funding is an important component for improving accessibility within the transportation network. Adams County endeavors to responsibly fund efforts to improve accessibility whenever possible. It is anticipated funding for improvements and mechanisms for project delivery may come from the following sources:

- Annual Capital Improvement Program Projects
- Federal Aid or Grants² – State Transportation Improvement Program (STIP), Highway Safety Improvement Program (HSIP), Safe Routes To Schools (SRTS), Congestion Mitigation and Air Quality Improvement (CMAQ), Surface Transportation Program (STP), Colorado Office of Transportation Safety (OTS) grants, Centers for Disease Control and Prevention (CDC), Community Development Block Grant (CDBG), Road Diet Projects, Multi-Modal Transportation Programs, Transportation Enhancement Activities (TEA), Transportation Alternatives (TA), Railway-Highway Crossing Program (RHC), and other pedestrian, mobility, development grants
- Intergovernmental Agreement (IGA) with neighboring jurisdictions

² NOTE: Many of these programs or types of programs are competitive type grants, therefore, agencies aren't guaranteed to receive these funds. The County will need to monitor these programs and decide whether to pursue the funds.

- Bonding
- Reallocation of departmental budgets
- Creation of Taxing Districts - Tax Increment Financing District (TIF), Community Improvement District (CID), Tax Allocation District (TAD)
- Adoption of Fees to fund an Enterprise associated with Accessibility

The ADA does not require the County to undertake any action that would result in a fundamental alteration in the intent of its program or activity, would create a hazardous condition, or would represent an undue financial and administrative burden. This determination shall include concurrence of the ADA Coordinator and must be accompanied by a statement citing the reasons for reaching the conclusion. The determination that undue burdens would result must be based on an evaluation of all resources available for use in the programs.

The following outlines the anticipated process for addressing accessibility barriers within the County's transportation network:

Coordinated/Included with another Project(s):

1. Annually review planned projects and compare project locations to locations of known accessibility issues.
2. Review project areas to identify or confirm and quantify accessibility barriers.
3. Identify available funding to allocate towards accessibility improvements.
4. Develop necessary Contract Document changes to incorporate proposed improvements into the overall project.
5. Inspect constructed improvements and document resolution of accessibility barrier(s).

Standalone Project(s):

1. Review documented accessibility barriers and identify locations without undue burdens to target, consistent with the Plan priorities, construction economics and other environmental factors, and available funding.
2. Identify available funding to allocate towards accessibility improvements.
3. Develop necessary Contract Document changes to incorporate proposed improvements into the overall project.
4. Inspect constructed improvements and document resolution of accessibility barrier(s).

Years prior to initiating the formal development of the Plan, the County commenced efforts to improve accessibility. These efforts are ongoing and will be re-focused as needed to maintain consistency with the vision of the Plan.

During the implementation of this Transition Plan, the County will base programming costs of the different project components based upon an Engineer's Estimate of Probable Costs on a per ramp, per linear foot of sidewalk or curb and gutter, and per each pedestrian push button basis. These programming costs should include an allowance for different elements typically associated with the specific improvements. Examples of these components include additional adjacent sidewalk or curb and gutter required to construct curb ramp, retaining walls, landscaping, pavement patching, and ROW. This estimated programming costs should also include contingencies for design and construction engineering and surveying. Because of the unknown nature of future capital improvement program projects and budgets,

development and re-development, federal grants, and general operating budgets; the County cannot accurately predict available future annual spending towards improving accessibility. An estimate of costs and potential timeline to address the findings of the self-assessment is provided in Appendix F.

As stated above, in an effort to provide a better understanding of the ADA and its requirements, the County is developing and will be providing two different ADA training measures. The first training measure will address County specific items such as the ADA Coordinator, requirements for public meetings, standardized language for public outreach and correspondence, and ADA support provided by the County. The second training measure will address issues more technical in nature such as current ADA standards and specifications and details; requirements for providing an accessible route; reasonable accommodations; and the design, construction, and inspection of accessible improvements. The measures provided may focus on a combination of these elements or single elements depending on the intended specific purpose or audience.

VIII. Monitoring & Updating Plan

The County will review the Plan on a periodic basis and update it as deemed appropriate to address progress towards improving accessibility and provide for any Plan modifications. The ADA Coordinator will work with the different County departments and appropriate staff during this review to identify updates and incorporate new information pertaining to accessibility and the ADA into the Plan. Public comments or suggestions received will be incorporated as deemed appropriate.

APPENDICES

APPENDIX A – DEFINITIONS

Accessible Route – a continuous, unobstructed path connecting all accessible elements and spaces including public transportation facilities, parking access aisles, curb ramps, crosswalks at vehicular ways, walks, ramps and lifts.

ADA – means and refers to the Americans with Disabilities Act as contained and explained in Title 42, Chapter 126 of the United States Code.

ADAAG – Americans with Disabilities Act Accessibility Guidelines, codified at Appendix A to 28 Code of Federal Regulations Part 36 and at Appendix A to 49 Code of Federal Regulations part 37.

Auxiliary Aids and Services – services and devices promoting effective communication or allowing access to goods and services as defined by Titles II and III of the ADA.

Curb Ramp – a short ramp cutting through a curb or built up to it.

Detectable Warning – truncated domes, typically pre-fabricated and installed or stamped into a walkway, providing a tactile surface at the transition from a curb and the street or other hazardous vehicular crossings, assisting pedestrians with vision disabilities in determining when they enter the street.

Disability – a physical or mental impairment substantially limiting one or more of the major life activities of an individual as defined by the ADA.

Impairment – any physiological disorder, or condition, cosmetic disfigurement, or anatomical loss affecting one or more body systems or any mental or psychological disorder, such as mental retardation, organic brain syndrome, emotional or mental illness, and specific learning disabilities.

Pedestrian Rights-of-Way (PROW) – sidewalks, curb ramps, crosswalks serving such sidewalks, and any other designated routes or pathways used by pedestrians along public rights of way.

PROWAG – Proposed Guidelines for Pedestrian Facilities in the Public Right-of-Way. At the time of this Initial Plan the most current version of the PROWAG is the 2011 Proposed Guidelines for Pedestrian Facilities in the Public Right-of-Way published by the United States Access Board. This document provides guidelines for public rights-of-way addressing various issues, including access for blind pedestrians at street crossings, wheelchair access to on-street parking, and various constraints posed by space limitations, roadway design practices, slope, and terrain.

Reasonable Accommodation – changes or adjustments providing, without undue burden, means for an individual with a disability to perform the duties or tasks required. Where existing physical constraints make it impractical for altered elements, spaces, or facilities to fully comply with new construction requirements, compliance is required to the extent practicable within the scope of the project. Existing physical constraints include, but are not limited to, underlying terrain, right-of-way availability, underground structures, adjacent developed facilities, drainage, or the presence of a notable natural or historic feature. See 2011 PROWAG and 28 C.F.R. § 35.130(b)(7).

Undue Burden – excessive or disproportionate financial and administrative burdens associated with modifying an existing facility and incurred by a covered entity, likely due to factors including, but not limited to, the nature and cost of the action; the overall financial resources of the owner(s); the number

of persons employed at the site; the effect on expenses and resources; legitimate safety requirements necessary for safe operation, including crime prevention measures; or any other impact of the action on the operation of the site; the geographic separateness, and the administrative or fiscal relationship of the site or sites in question to any parent corporation or entity; if applicable, the overall financial resources of any parent corporation or entity; the overall size of the parent corporation or entity with respect to the number of its employees; the number, type, and location of its facilities; and if applicable, the type of operation or operations of any parent corporation or entity, including the composition, structure, and functions of the workforce of the parent corporation or entity.

APPENDIX B – COUNTY POLICY REGARDING THE ADA

NOTICE UNDER THE AMERICANS WITH DISABILITIES ACT

In accordance with the requirements of Title II of the Americans with Disabilities Act of 1990 ("ADA"), Adams County will not intentionally discriminate against qualified individuals with disabilities on the basis of disability in its services, programs, or activities.

Anyone desiring or requiring an auxiliary aid or service for effective communication, or a modification of policies or procedures to participate in a program, service, or activity of Adams County should contact the ADA Coordinator identified in Appendix C of the Plan as soon as possible but no later than 48 hours before the scheduled event.

Adams County Board of County Commissioners has to budget and appropriate on an annual basis. While Adams County intends to make services available for auxiliary aid or service for effective communication such as translators, the company contracted for those services may be temporarily unavailable. If other service needs of the County, such as emergency responders/response, becomes a priority, then the service for effective communication may be delayed.

The ADA does not require Adams County to take any action that would fundamentally alter the nature of its programs or services, or impose an undue financial or administrative burden.

APPENDIX C – ADA COORDINATOR CONTACT INFO

Adams County ADA Coordinator

County Attorney's Office
4430 S. Adams County Pkwy.
5th Floor, Suite C5000B
Brighton, CO 80601-8206

Ph: 720.523.6116

Fax: 720.523.6114

<http://www.adcogov.org/>

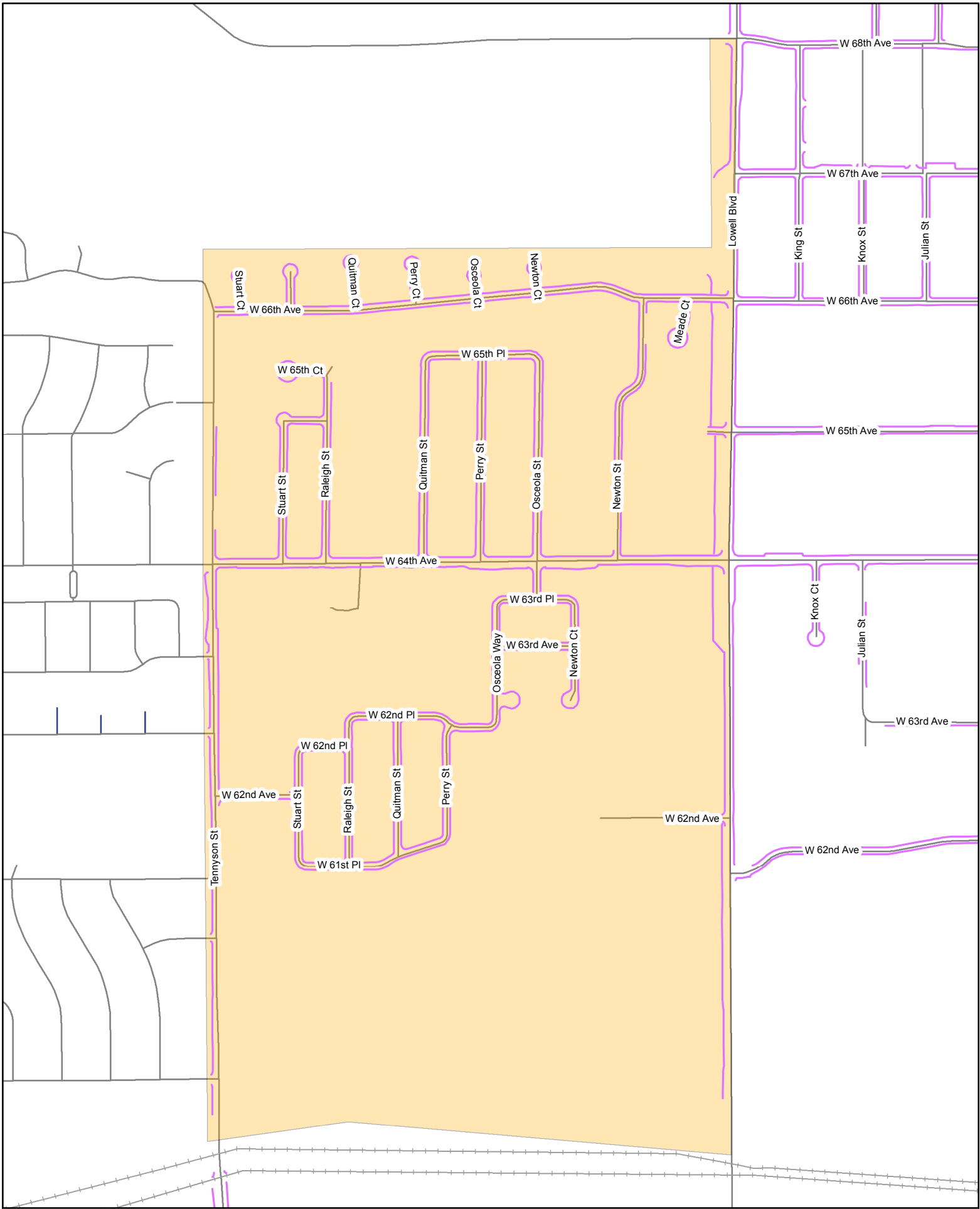
Hours

Monday - Friday

8:00 a.m. - 4:30 p.m.

(Excluding County holidays)

APPENDIX D – INVENTORY OF PUBLIC FACILITIES ASSESSED

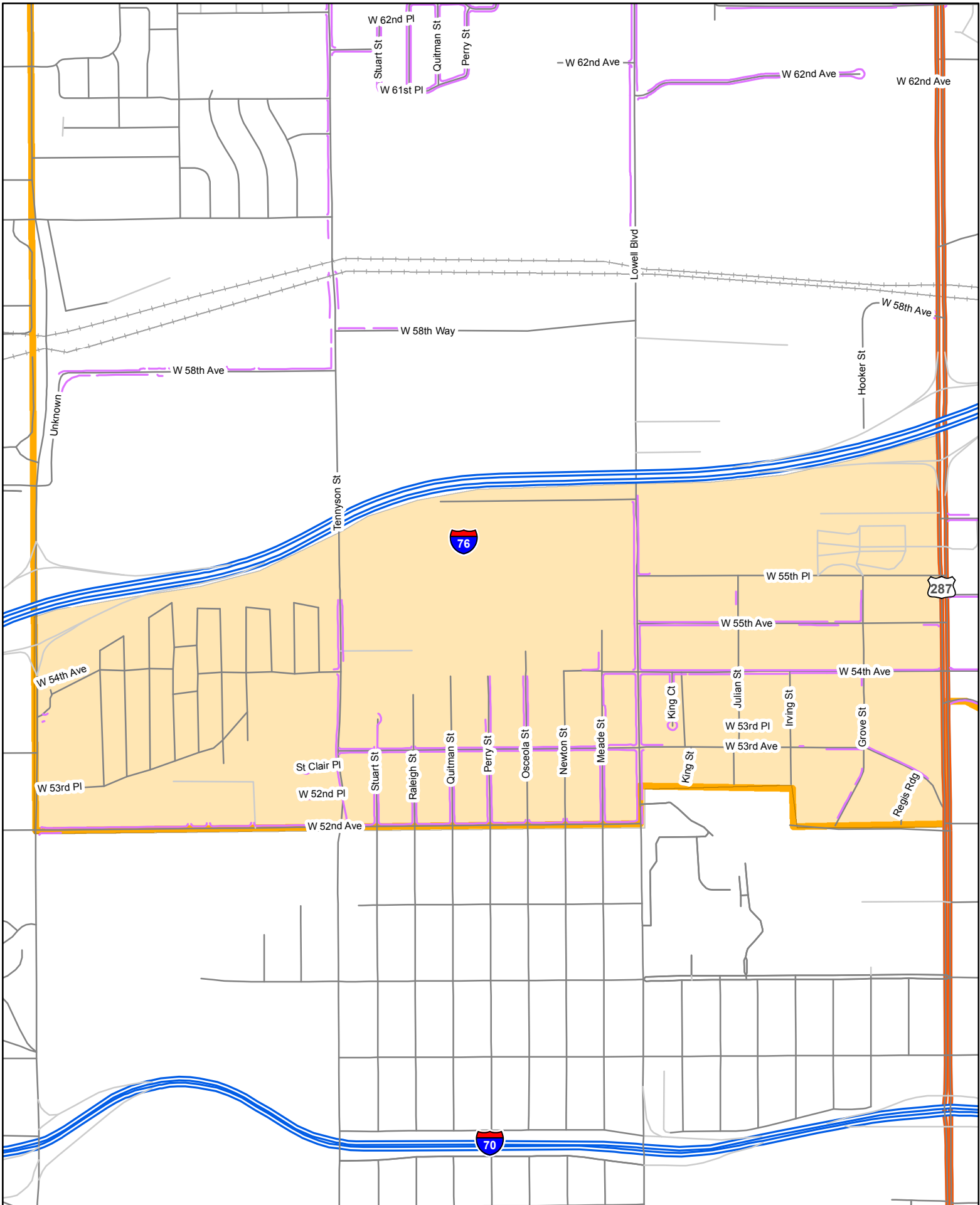


BAKER



LEGEND

- Sidewalk
- Neighborhood

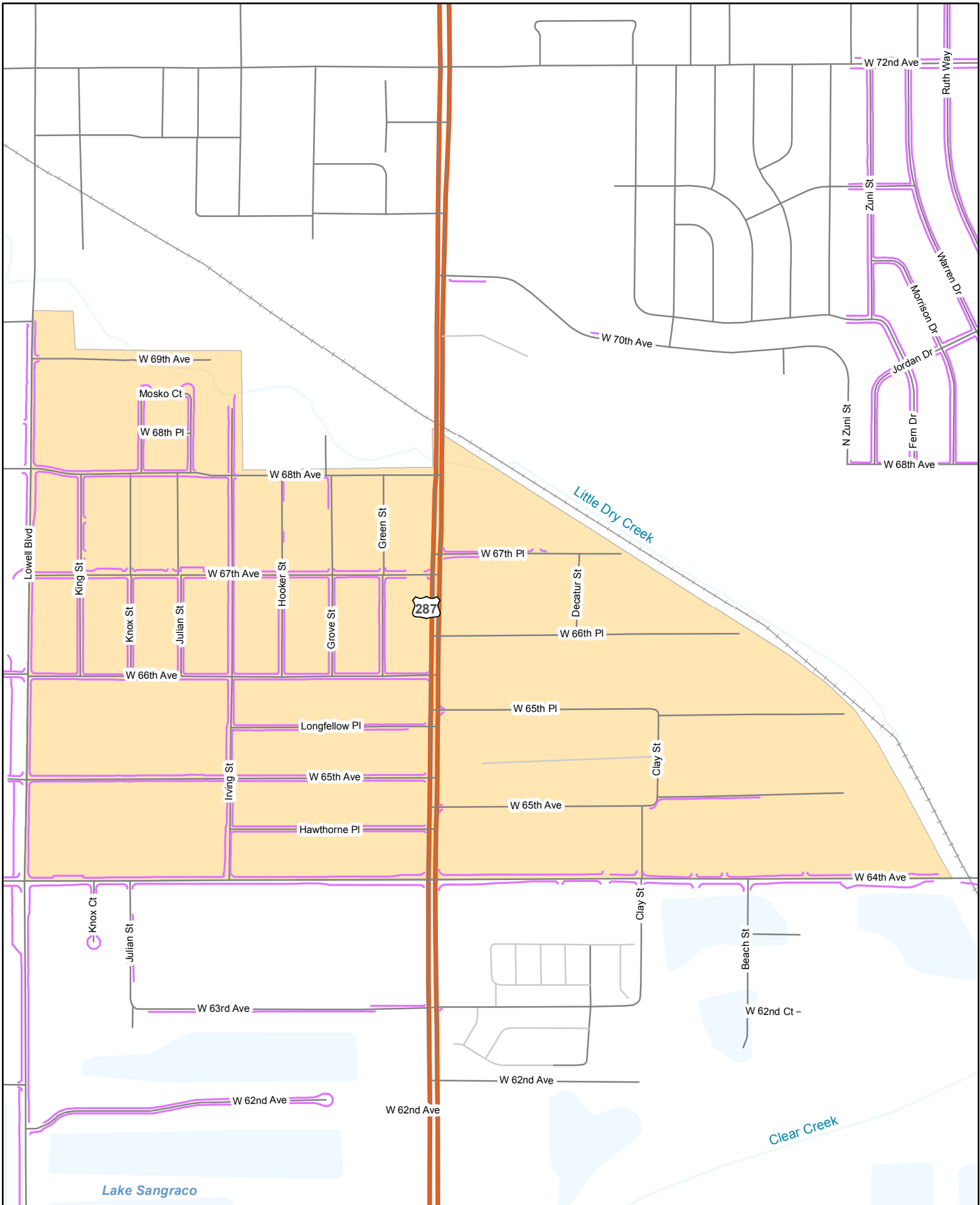


BERKELEY



LEGEND

- Sidewalk
- Neighborhood

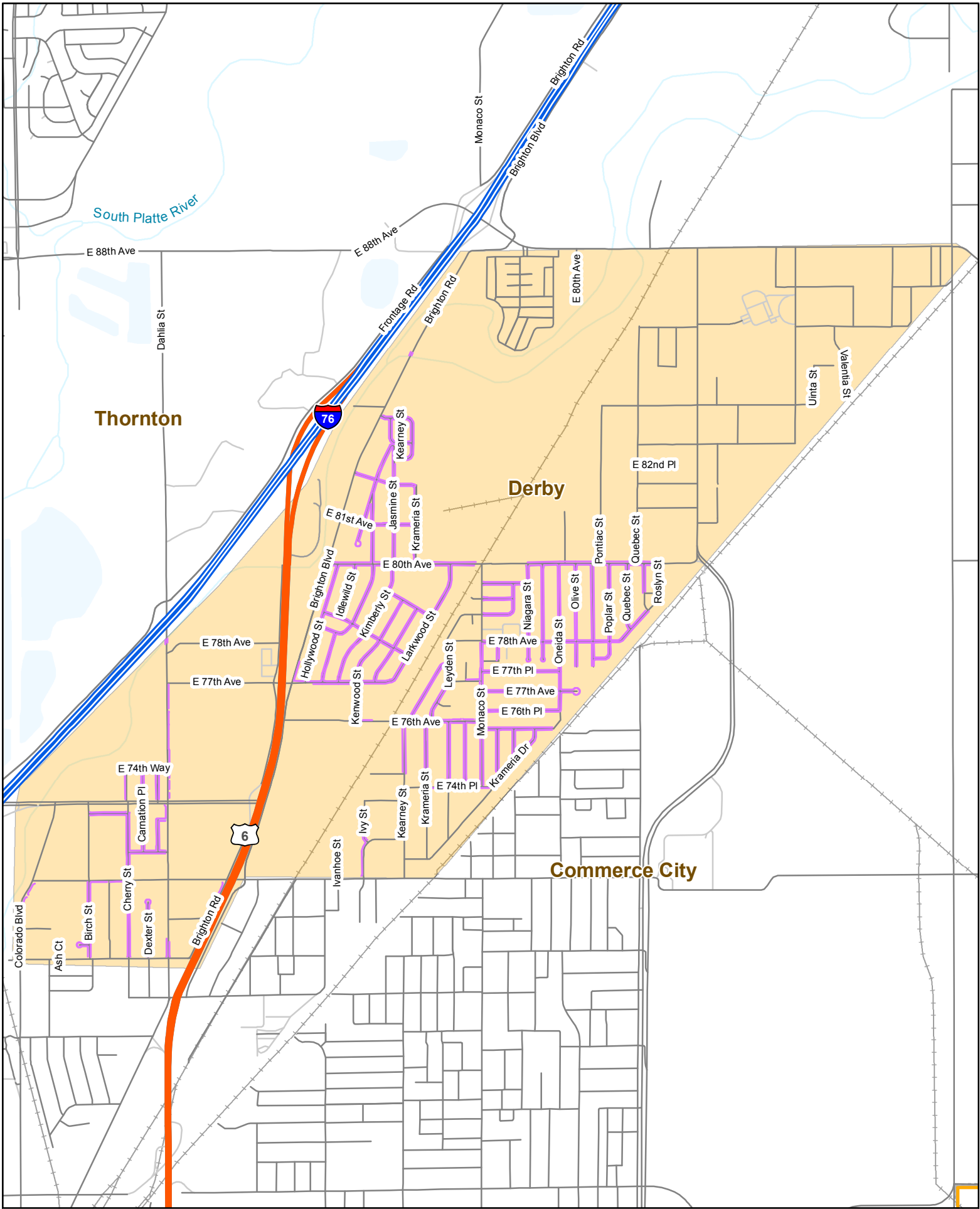


GOAT HILL



LEGEND

- Sidewalk
- Neighborhood

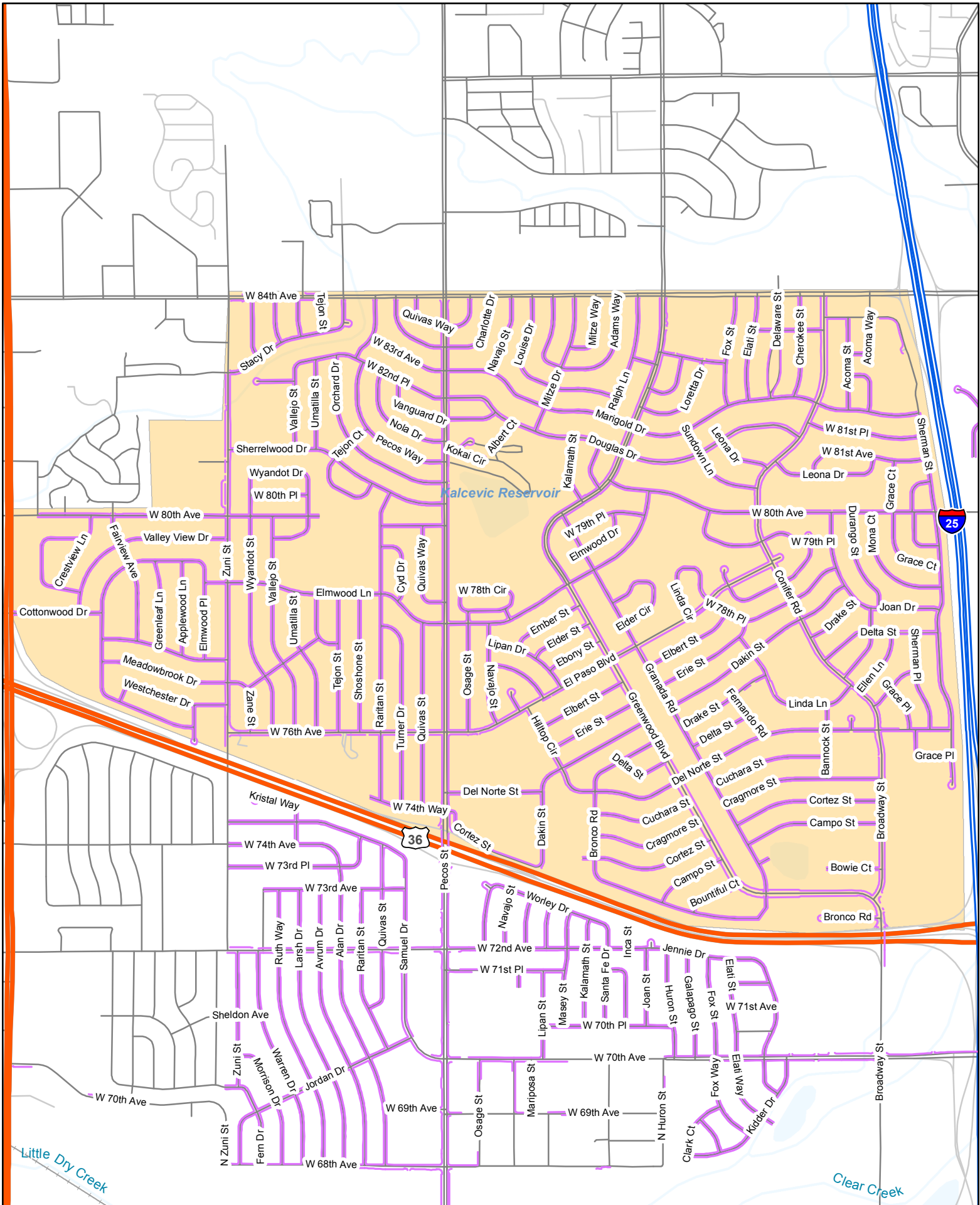


MONACO/ DUPONT



LEGEND

- Sidewalk
- Neighborhood

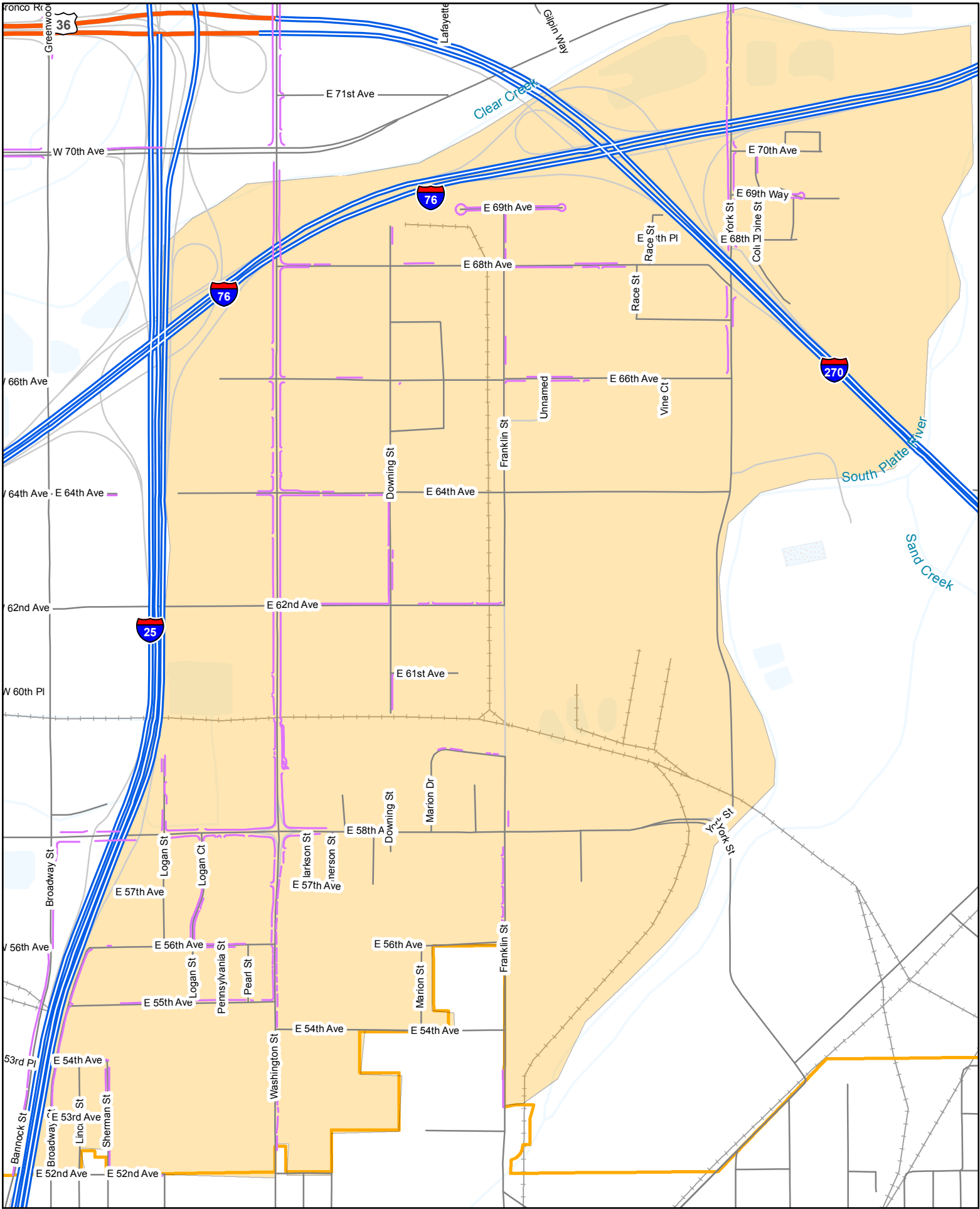


NORTH PERL MACK



LEGEND

- Sidewalk
- Neighborhood

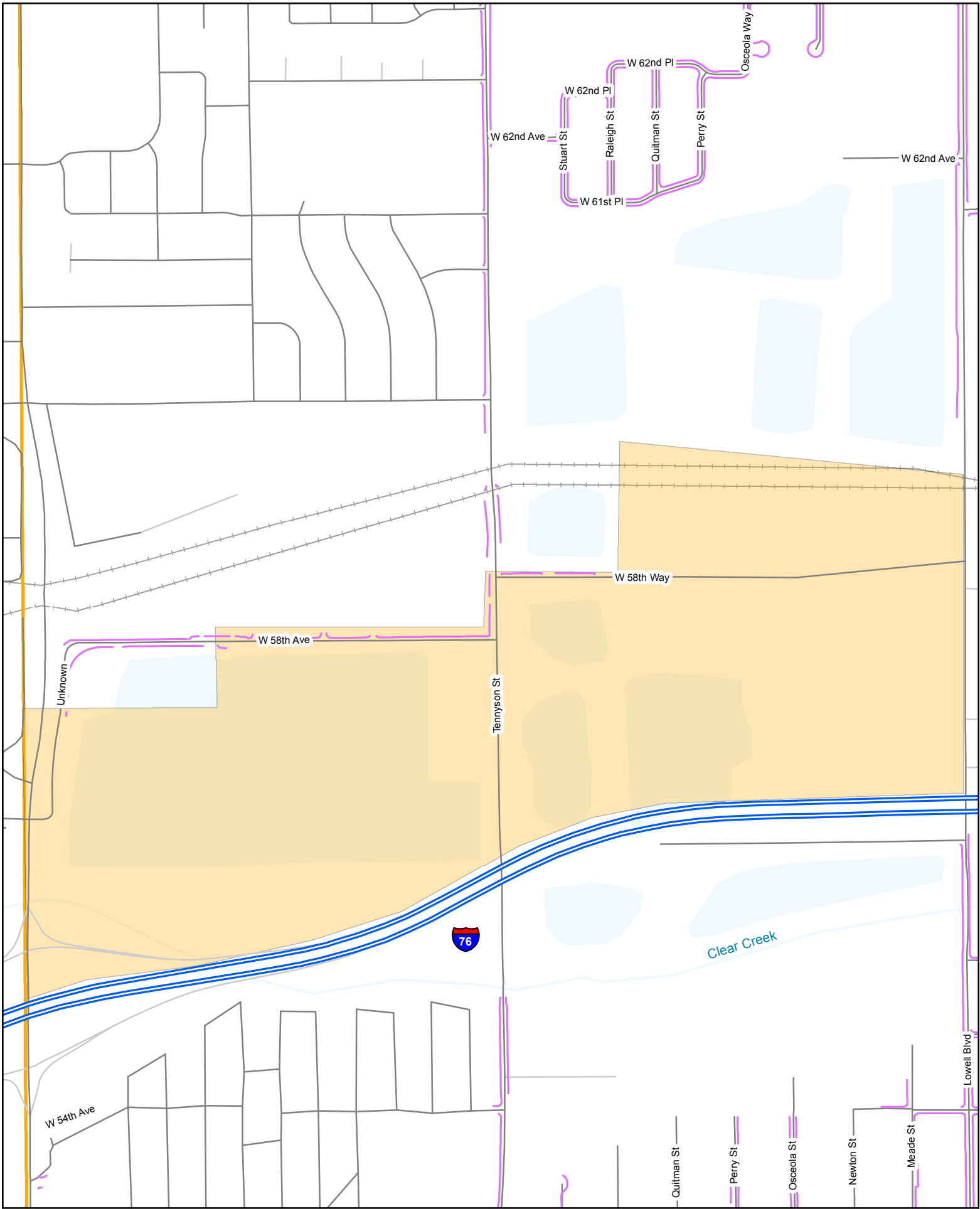


NORTH WASHINGTON INDUSTRIAL



LEGEND

-  Sidewalk
-  Neighborhood

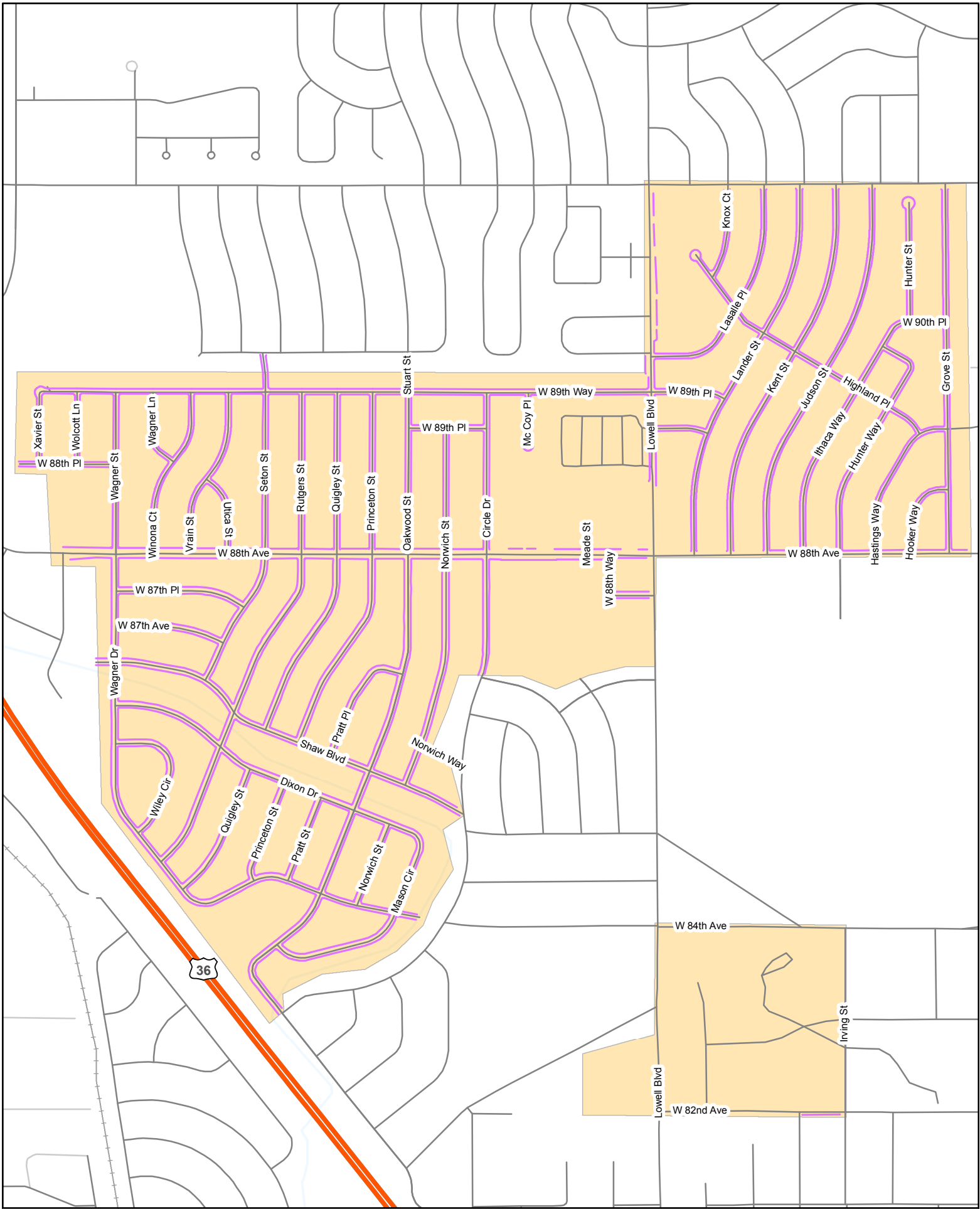


SE ARVADA



LEGEND

-  Sidewalk
-  Neighborhood

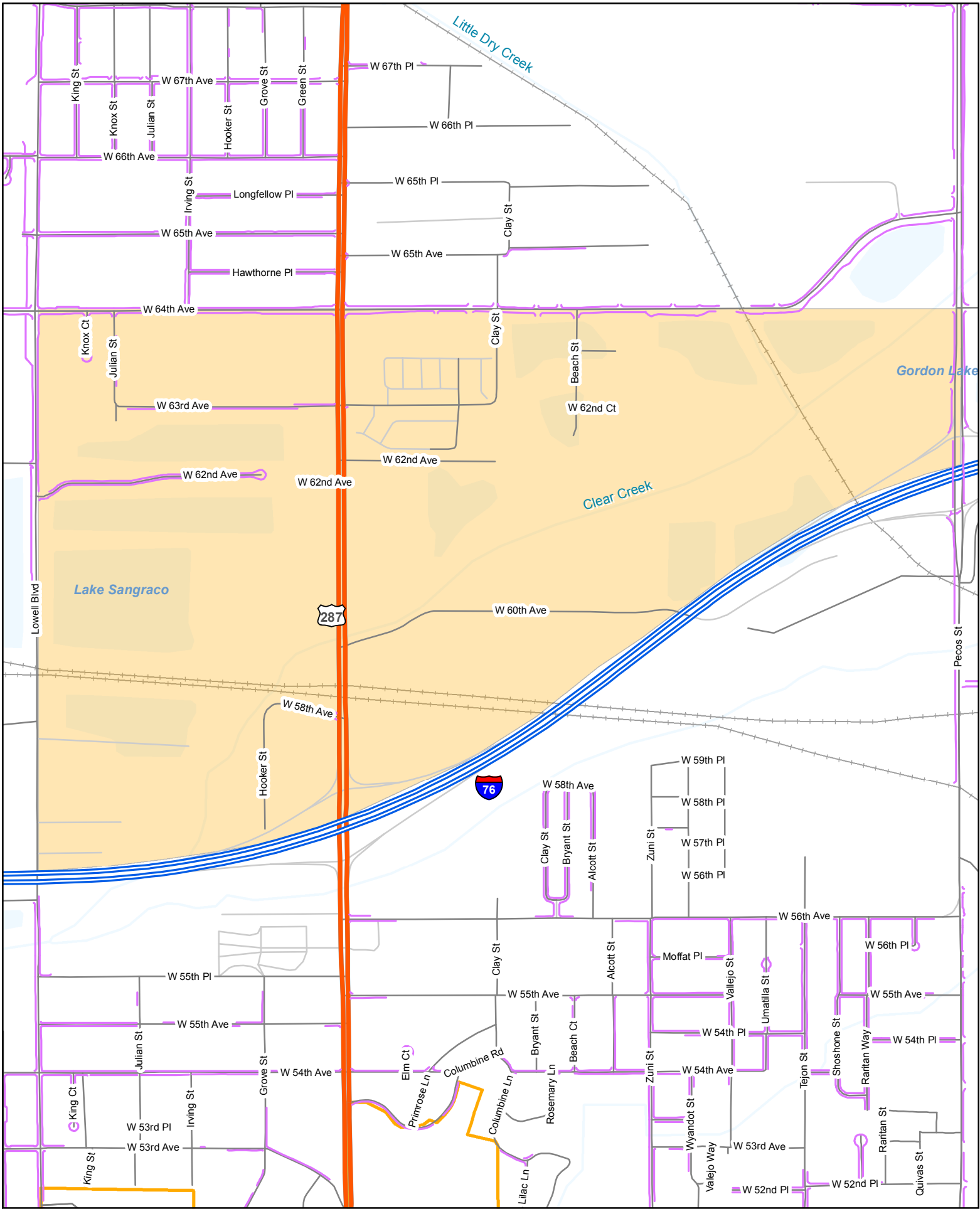


SHAW HEIGHTS



LEGEND

- Sidewalk
- Neighborhood

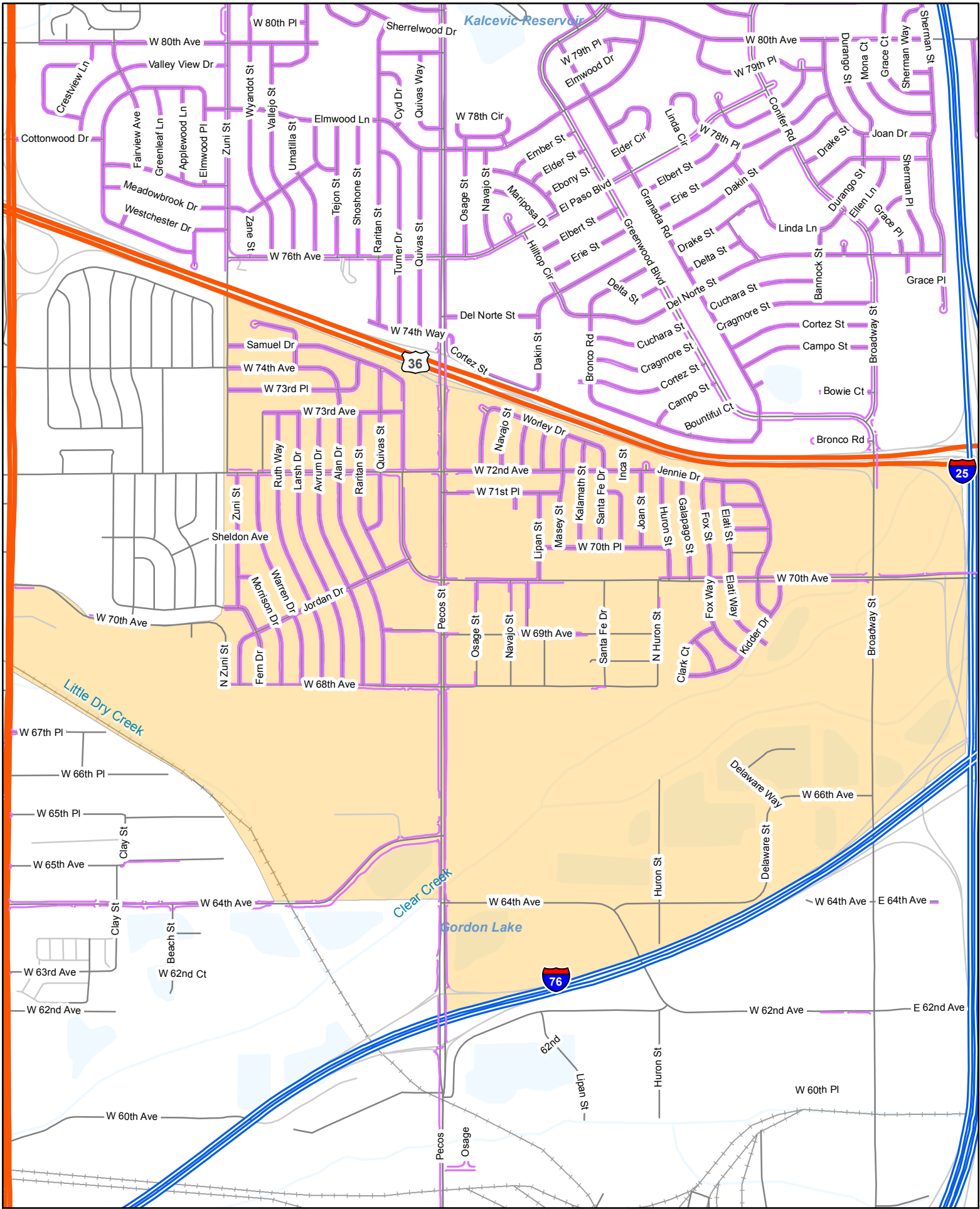


SOUTH FEDERAL



LEGEND

- Sidewalk
- Neighborhood

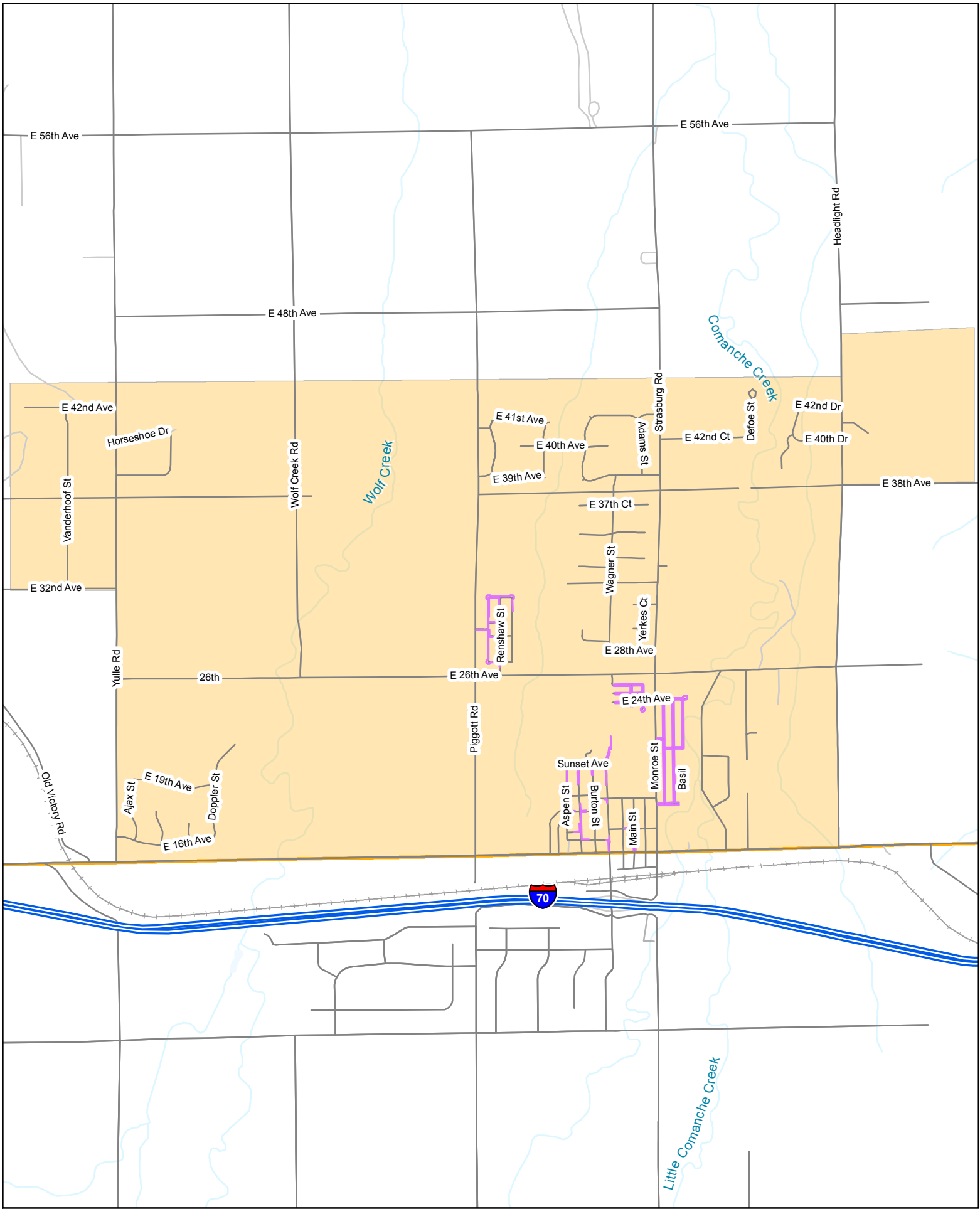


SOUTH PERL MACK



LEGEND

- Sidewalk
- Neighborhood

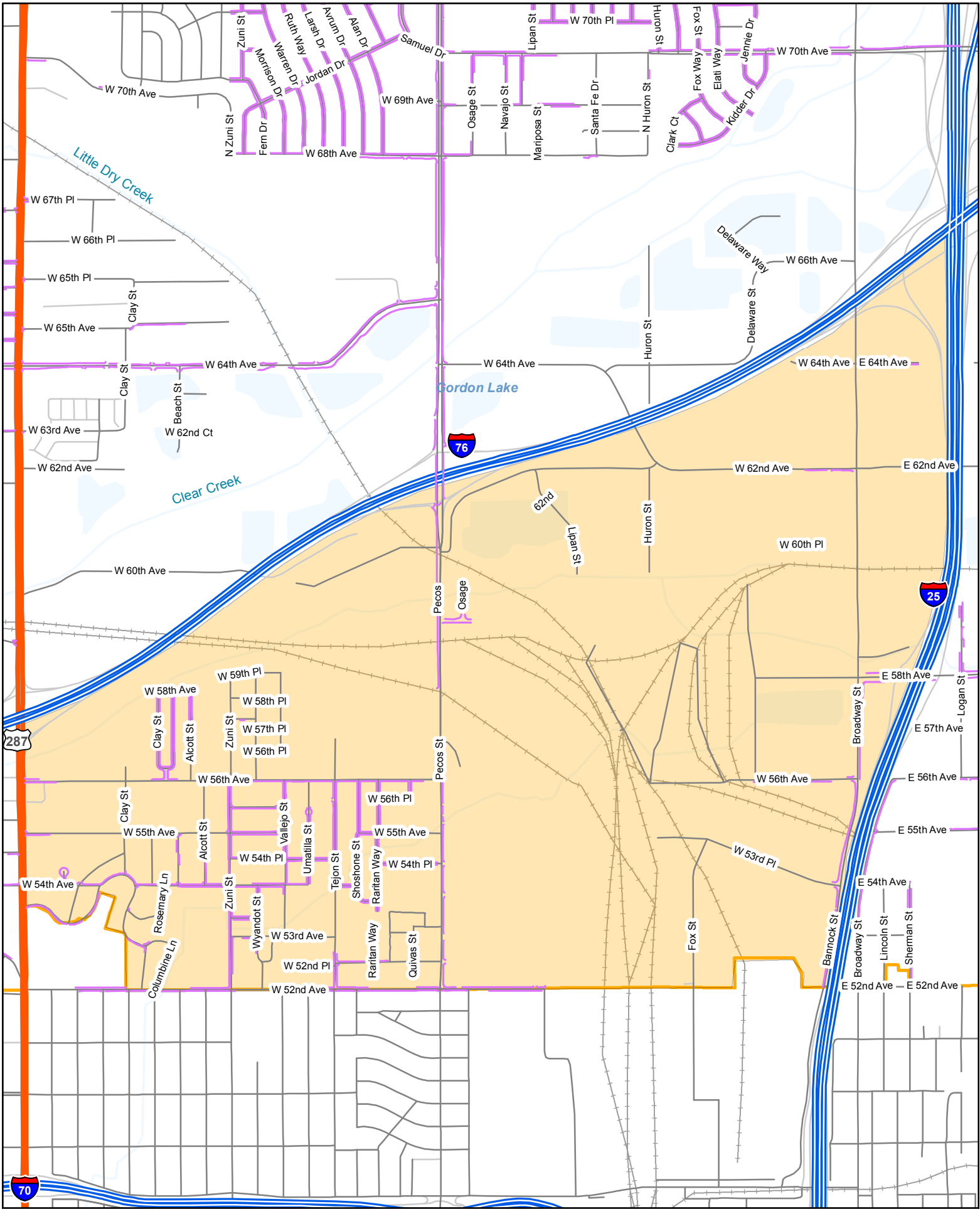


STRASBURG



LEGEND

- Sidewalk
- Neighborhood

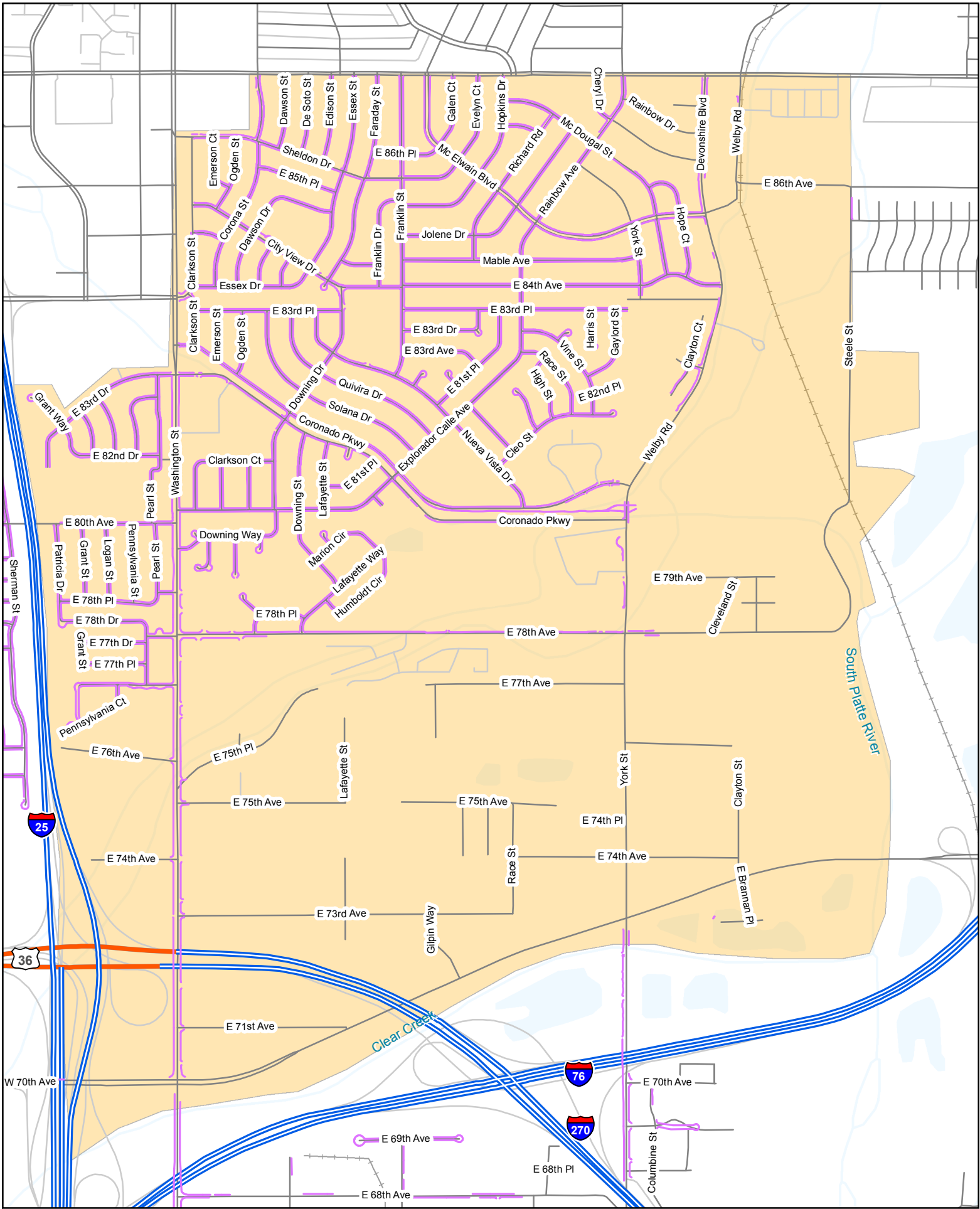


UTAH JUNCTION



LEGEND

- Sidewalk
- Neighborhood

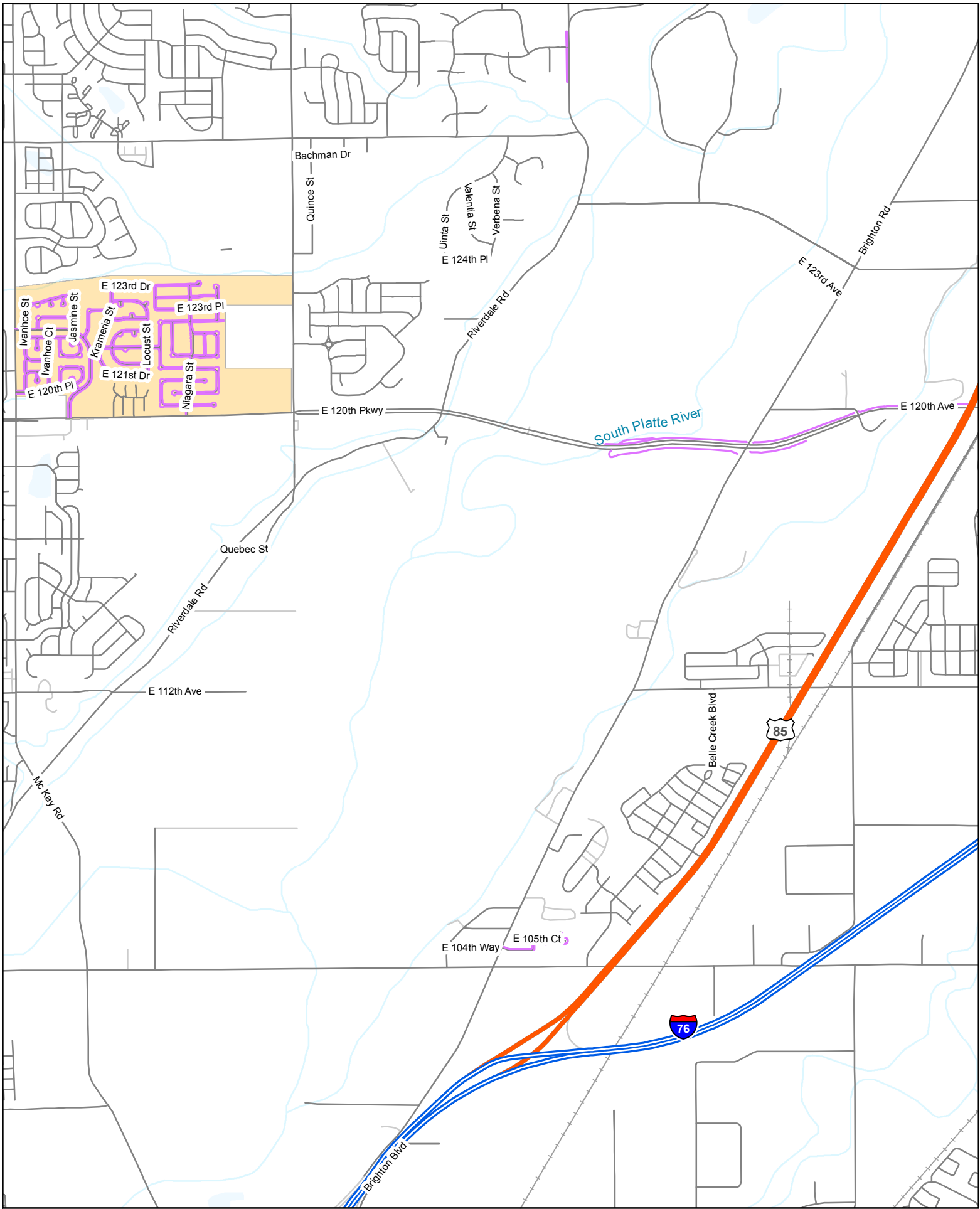


WELBY



LEGEND

- Sidewalk
- Neighborhood



WRIGHT FARMS/ HOLLY CROSSING



LEGEND

-  Sidewalk
-  Neighborhood

APPENDIX E – OVERVIEW OF ASSESSMENT ATTRIBUTES/PARAMETERS

I. Curb Ramp Assessment Elements

1. **Number of Curb Ramps Present?**
 - 0
 - 1
 - 2
2. **What type of curb ramp configuration is present?**
 - Single
 - Double
 - Diagonal
 - Midblock
 - Median
 - Railroad
 - N/A
3. **What type of curb ramp arrangement is present?**
 - Parallel
 - Perpendicular
 - Blended Transition
 - N/A
4. **Number of Curb Ramp(s) Needing to be Added?**
 - 0
 - 1
 - 2
5. **What will be the ultimate curb ramp configuration?**
 - Single
 - Double
 - Diagonal
 - Midblock
 - Median
 - Railroad
 - N/A
6. **Is the ramp free of any vertical discontinuities >0.5" from the curb lip to the top of the ramp? (Yes – No)**
7. **Is the area at the base of the ramp clear of parallel vehicle traffic? (Yes – No)**
8. **What is the ramp width?**
 - <4'
 - 4'-5'
 - 5'-6'
 - >6'
9. **Does the ramp have a max cross slope of <2% near the top of the ramp? (Yes – No)**
10. **What is the running slope of the ramp?**
 - 0 - 5.0%
 - 5.0 - 8.3%
 - 8.3 - 12.0 %
 - > 12.0%
11. **Are compliant flared sides present? (Yes – No)**
12. **Are all joints or cracks with gaps present <0.5"? (Yes – No)**
13. **Are there prefabricated domes or dome panel(s) present? (Yes – No)**
14. **Does the dome panel have the correct placement and orientation? (Yes – No)**
15. **Does the dome panel color contrast with the surrounding material? (Yes – No)**
16. **Is the dome panel 2' long and the full width of the ramp? (Yes – No)**
17. **Does the defined landing have a max slope less than 2%? (Yes – No)**
18. **Is there a defined landing with the proper minimum dimensions? (Yes – No)**

II. Sidewalk Assessment Elements

1. Does a sidewalk need to be constructed to establish a pedestrian route? (Yes – No)
2. Existing sidewalk surface type?
 - Concrete
 - Concrete Integral with Curb and Gutter
 - Asphalt
 - Brick/Pavers
 - Aggregate
 - Wood chip
 - Other
 - None Present
3. Is the running slope generally consistent with the adjacent street? (Yes – No)
4. What is the width of sidewalk?
 - <3'
 - 3'-4'
 - 4'-5'
 - >5'
5. How many obstructions are present restricting the sidewalk width?
 - 0
 - 1-5
 - 6-10
 - >10
6. What is the predominant cross slope of sidewalk?
 - < 2%
 - 2 - 3%
 - 3 - 4%
 - > 4%
7. What is the maximum cross slope of sidewalk?
 - < 2%
 - 2 - 3%
 - 3 - 4%
 - > 4%
8. How many driveway crossings have a cross slope greater than 2%?
 - 0
 - 1-5
 - 6-10
 - >10
9. How many trip hazards or faulted panels are present?
 - 0
 - 1-5
 - 6-10
 - 10-20
10. How many horizontal gaps at on-plane joints and cracks >0.5" are present?
 - 0
 - 1-5
 - 6-10
 - >10

III. Pedestrian Pushbutton Assessment Elements

1. Are pedestrian pushbuttons in an accessible location on the pole or mounted surface? (Yes – No - N/A)
2. Are pedestrian pushbutton located above a compliant sidewalk area? (Yes – No - N/A)

APPENDIX F – ASSESSMENT FINDINGS

CURB RAMPS

Presently, there are 3,163 corner, midblock or median crossing locations within unincorporated Adams County where curb ramps either exist or could exist. The following identifies the existing ramp configuration present. The (X%) indicates the likely ultimate configuration.

No Ramps.....	8% (4%)	Double Ramp	1% (8%)
Single Ramp	78% (78%)	Midblock Ramp	6% (8%)
Diagonal Ramp	6% (2%)	Median Ramp	<1% (<1%)

Of the 2,902 existing curb ramps, most (77%) are orientated parallel with the direction of travel. The remaining ramps (23%) are orientated perpendicular to the back of curb. The following provides other data on the existing curb ramps present.

RUNNING SLOPE OF RAMPS

< 5.0%.....	64%	8.3 –12.0%	17%
5.0 – 8.3%.....	15%	> 12.0%	4%

WIDTH OF RAMPS

< 4'	51%	5' – 6'	6%
4' – 5'	40%	> 6'	3%

OTHER CURB RAMP PROPERTIES

	<u>YES</u>	<u>NO</u>
Ramp is Fully Compliant.....	2%	98%
Vertical Profile is Free of Obstructions	75%	25%
Base of Ramp Clear of Parallel Traffic.....	90%	10%
Maximum Cross Slope is <2%	29%	71%
Compliant Flared Sides	76%	24%
Compliant Dome Panel(s)	35%	65%
Compliant Landing Area.....	12%	88%

Of the locations surveyed currently without a ramp, 140 would not improve accessibility with the addition of a curb ramp. For locations with an existing ramp(s), 260 would improve accessibility with the addition of a ramp to provide a crossing in another direction.

SIDEWALK

Presently there are 4,396 sidewalk locations where sidewalk either exists or could exist. These locations total approximately 316 miles of sidewalk. 4,339 locations, or 313 miles, currently have sidewalk constructed. The following details the breakdown of types of sidewalk present in the unincorporated portions of Adam County.

Concrete.....	11%	Brick	< 1%
Asphalt	< 1%	Aggregate.....	1%
Concrete Integral	88%	Other.....	<1%
w/ Curb & Gutter			

Only 1% of the existing sidewalks are fully compliant. 4% of the constructed sidewalks have gaps preventing continuity. Approximately 12 miles of sidewalk is needed to connect existing sidewalk segments with nearby sidewalk segments to provide connectivity within the sidewalk network.

<u>SIDEWALK ISSUES</u>	<u>0</u>	<u>1 – 5</u>	<u>6 – 10</u>	<u>> 10</u>
Obstructions	92%	7%	< 1%	< 1%
Cross Slope > 2% @ Driveways	30%	45%	14%	11%
Trip hazards / Faulted Panels.....	46%	48%	5%	2%
Joints / Cracks > 0.5" Wide	25%	57%	12%	6%

<u>CROSS SLOPE OF SIDEWALK</u>	<u>< 2%</u>	<u>2% – 3%</u>	<u>3% – 4%</u>	<u>> 4%</u>
Typical	29%	40%	22%	9%
Maximum.....	18%	32%	27%	23%

PEDESTRIAN PUSH BUTTONS

Pedestrian push buttons are currently installed at 3% of the curb ramp locations. For the locations having pedestrian push buttons, 75% are in accessible locations.

ESTIMATED COSTS TO CORRECT ACCESSIBILITY CHALLENGES³

The following provides present day cost estimates and annual budgets to construct or reconstruct pedestrian transportation assets to improve accessibility. Market forces and packaging may result in these costs varying.

<u>ASSET ELEMENTS</u>	<u>ESTIMATED COST</u>	<u>YEARS 1 – 20</u>	<u>YEARS 21 – 30</u>	<u>YEARS 31 – 50</u>
Curb Ramps	\$8.3 million	\$275,000	\$275,000	\$0
Sidewalk	\$38.0 million	\$690,000	\$700,000	\$975,00
Pedestrian Push Buttons	\$0.2 million	\$10,000	\$0	\$0
Total	\$46.5 million	\$975,000	\$975,000	\$975,000

³ Estimated costs include planning, engineering, and construction costs. Due to the large volume of sidewalk infrastructure and the need to prioritize funds, it is not reasonable or feasible to remove and replace all sidewalk segments with global, linear issues as a targeted standalone project or projects. Because of this, when considering a long term strategy to improve accessibility, targeting single point or small area issues initially and address linear issues under a future initiative or as part of other infrastructure improvement projects as opportunities become available is recommended.

APPENDIX G – PUBLIC INVOLVEMENT DOCUMENTATION
(WEBSITE, PRESS RELEASE, USER SURVEY, ETC.)

ABOUT
ADAMS COUNTY

A-Z SERVICES


GOVERNMENT

EMPLOYMENT

NEWSROOM

Search 

 home  print

 Select Language | ▾



ADAMS COUNTY

COLORADO

Home > Government > Americans With Disabilities

Americans With Disabilities

Adams County is committed to ensuring individuals with disabilities have an equal opportunity to participate in our programs, services, and activities. Please refer to our [Disability Rights Notice](#) for more information.

SECTION 504 OF THE REHABILITATION ACT OF 1973 (Section 504) is a federal law protecting qualified individuals with disabilities from discrimination. This law applies to entities receiving federal assistance.

TITLE II OF THE AMERICANS WITH DISABILITIES ACT OF 1990, AS AMENDED (ADA) is a federal law protecting qualified individuals with disabilities from discrimination. This law applies to all state and local government agencies.

DISABILITY is defined as a person with a physical or mental impairment that substantially limits one or more of the major life activities; a record of such an impairment; or being regarded as having such an impairment. Major life activities include caring for one's self, walking, seeing, hearing, speaking, breathing, working, and learning.

QUALIFIED INDIVIDUAL WITH A DISABILITY is defined in Title II ADA as "an individual with a disability who, with or without reasonable modifications to rules, policies, or practices, the removal of architectural, communication, or transportation barriers, or the provision of auxiliary aids and services, meets the essential eligibility requirements for the receipt of services or the participation in programs or activities provided by a public entity."

More Information

If you have questions, please contact the ADA Coordinator:

Valerie Fennell
ADA & CORA Coordinator
County Attorney's Office
4430 S. Adams County Parkway, Suite C5000B
Brighton, CO 80601-8206
Phone: 720.523.6882 | Fax: 720.523.6114 | [Email](#)

Americans With Disabilities

Animal Shelter / Adoption Center

Assessor

Board of Commissioners

Budget Office

Citizen Advisory Boards and Commissions

Clerk & Recorder

Coroner

Community and Economic Development

Community Corrections

County Attorney

County Manager

County Ordinances

Criminal Justice Coordinating Committee- CJCC

Deputy County Manager - External Services

Deputy County Manager - Internal Services

District Attorney

Elected Officials

Elections

Emergency Management

Facility Operations

Finance Department

Finance Reports

Fleet Management

Front Range Airport

GIS/Business Solutions

Heart at Work

Human Resources

Human Services

Engage your community - connect to news, events and information you care about. [View more information...](#)

[Sign In](#)



ADAMS COUNTY

COLORADO

- [Information Technology](#)
- [Liquor Licensing](#)
- [Motor Vehicle](#)
- [Long Range Strategic Planning](#)
- [Open Adams](#)
- [Parks & Open Space](#)
- [PIO/Communications](#)
- [Public Trustee](#)
- [Retirement Administration](#)
- [Sheriff](#)
- [Surveyor](#)
- [Sustainability](#)
- [Transparency Hotline](#)
- [Transportation Department](#)
- [Treasurer](#)
- [Workforce & Business Center](#)

SERVICE CENTER

[CODES & ORDINANCES](#)

[CONTACT ADAMS COUNTY](#)

[PUBLIC RECORDS/MAPS](#)

[DEVELOPMENT STANDARDS & REGULATIONS](#)

[CONNECT WITH US](#)



Adams County Government Center • 4430 South Adams County Parkway • Brighton, Colorado 80601 • Ph: 303.659.2120 • 800.824.7842
[Home](#) • [Green](#) • [Contact Us](#) • [Mobile](#) • [Apps Download](#) • [Sitemap](#) • [Accessibility](#) • [Copyright Notices](#) • [Privacy and Disclaimer](#) • Powered by CivicPlus

ABOUT
ADAMS COUNTY

A-Z SERVICES

GOVERNMENT

EMPLOYMENT

NEWSROOM

Search

[home](#) [print](#)

Select Language

ADA Transition Plan

Construction
Management

Highways

Report A Road Issue

Stormwater
Management Division

Traffic Operations

SERVICE CENTER

CODES & ORDINANCES

CONTACT ADAMS
COUNTY

PUBLIC RECORDS/MAPS

DEVELOPMENT
STANDARDS &
REGULATIONSADAMS COUNTY
COLORADO

Home > Government > Transportation Department > ADA Transition Plan

ADA Transition Plan

About the Project

As required by Title II of the ADA and 28 CFR 35.105, the Adams County is developing a Transition Plan to improve access compliance to pedestrian facilities within the county's jurisdiction. As part of this effort, the county has retained an engineering consultant, Alfred Benesch & Company, to assist county staff in developing the Transition Plan.

The county has developed a process for creating and implementing the Transition Plan. The first step in this process is to conduct self-evaluation by inventorying and assessing existing pedestrian facilities to identify access barriers to persons with disabilities within the public Right-of-Way. The inventory will assess pedestrian facilities along roadways, primarily sidewalks and curb ramps, to document what facilities are present and in compliance with the applicable standards or need to be constructed or improved to be compliant.

What's Happening

Currently, the inventory and assessment activities are underway. It is anticipated a public meeting will be scheduled and special interest groups will be contacted to start gathering additional information.

Part of the self-evaluation process includes a public outreach program to gain public input and help identify particular existing areas of concern. The self-evaluation findings will provide the framework for developing the county's ADA Transition Plan. Besides identifying the results of the self-evaluation, the Transition Plan will prioritize addressing the identified existing barriers and identify strategies for addressing them. It will also provide standards and guidelines for future improvements to the pedestrian network within the county's public right-of-ways

Contact

Anna Sparks, PE
Adams County Project Manager
asparks@adcogov.org
720.523.6859

Jess Hastings, PE
Project Manager
jhastings@benesch.com
7979 E. Tufts Avenue, Suite 800
Denver, CO 80210
303.771.6868

CONNECT WITH US





Transportation Department
4430 South Adams County Parkway
1st Floor, Suite W2000B
Brighton, CO 80601-8218
PHONE 720.523.6875
FAX 720.523.6996
www.adcogov.org

ADA Transition Plan Survey

Adams County, Colorado - ADA Transition Plan Survey

Adams County, Colorado is performing a public outreach program toward the development of an Americans with Disabilities Act (ADA) Transition Plan (Plan). The purpose of this Plan is to eliminate pedestrian facilities barriers within public right-of-ways in unincorporated Adams County (County). Barriers are typically eliminated by adding or correcting sidewalks and curb ramps. One component of the public outreach program is this survey. It will be used to help document concerns and locations of needed improvements to accommodate disabled users of pedestrian facilities in the County. While efforts won't immediately result in improvements, the resulting Plan will provide the County a document that will provide guidance to making ADA related improvements, as funding allows.

It is the County's preference that this survey be taken online at www.surveymonkey.com/s/adamsadatransitionplan to help reduce misinterpretation of information and data entry errors. However, if you require this survey in an alternate format (paper, large font, audio), please contact Jess Hastings at 720-473-7576; or jhastings@benesch.com.

We would like your contact information to allow the ADA Transition Plan team to keep you up to date via email on Plan progress and follow up. Any information provided will remain confidential and will not be posted, shared, or otherwise made available to anyone outside the ADA Transition Plan team. Only comment summaries will be documented in the ADA Transition Plan. Thank you for your input!

First Name*:

Last Name*:

and/or Business Name*:

Street Address:

City:

State:

Zip:

Phone Number:

Email Address*:

(BCC distribution emails only)

1. Have you experienced physical barriers or constraints on a pedestrian path you currently use or would like to use?

Yes

No

If yes, please provide more information relating to your experiences by answering the next 4 questions.
If no, jump to question 6.



Name: _____

2. Have you encountered street segments or locations where sidewalks are missing, inaccessible, or in poor condition?

Yes **No**

If yes, please provide the street name(s), segment(s) of street, side(s) of street, and describe your concerns:

3. Have you encountered locations where curb ramps are missing, inaccessible, or in poor condition?

Yes **No**

If yes, please provide intersecting street names, location(s) and describe your concerns:

4. Have you encountered intersections or mid-block crossings, where medians or traffic signals affect your ability to cross the street?

Yes **No**

If yes, please provide intersecting street names, location(s) and describe your concerns:

5. Have you encountered any physical obstructions like roots, trees, branches, bushes, retaining walls, signs, fire hydrants or other?

Yes **No**

If yes, please provide street name(s), segment(s) of street, side(s) of street, and describe your concerns:

6. Do you have any more specific or general comments that you feel the ADA Transition Plan team should consider related to pedestrian facilities?

Thank you for participating in this survey!



If you prefer not to provide the required personal information above, but have comments for consideration, please click Print and mail a hard copy to Jess Hastings at 7979 E. Tufts Avenue, Suite 800, Denver, Colorado 80237

- ABOUT ADAMS COUNTY
- A-Z SERVICES
- GOVERNMENT
- EMPLOYMENT
- NEWSROOM

Adams County Seek

[home](#) [print](#)

Select Language

- Contact Adams County
- Boards & Commissions Public Hearings
- BOCC Public Hearings
- BOCC Public Study Sessions
- Department Directory
- Meet the Elected Officials
- Stay Connected
- Stormwater Utility
- Transparency Hotline
- Transparency Portal
- YourGOV: Report an Issue

SERVICE CENTER

CODES & ORDINANCES

CONTACT ADAMS COUNTY

PUBLIC RECORDS/MAPS

DEVELOPMENT STANDARDS & REGULATIONS



ADAMS COUNTY COLORADO

Home > News Flash

[News Flash Home](#)

The original item was published from 7/21/2015 3:54:26 PM to 8/7/2015 12:00:00 AM.

County News Releases

Posted on: July 21, 2015

[ARCHIVED] Adams County Seeking Input on ADA Transition Plan

As required by Title II of the Americans with Disabilities Act (ADA) and 28 CFR 35.105, Adams County is developing a transition plan to improve access compliance to pedestrian facilities within the county's jurisdiction. Alfred Benesch & Company is assisting county staff in developing the transition plan.

Existing pedestrian facilities within the public right-of-way are currently being inventoried and analyzed to gain relevant data. In conjunction with this effort, Adams County would like public input to help identify specific areas of concern. A brief survey to provide the desired input can be accessed through the county's website, www.co.adams.co.us (search keyword ADA), or at www.surveymonkey.com/r/adamsadatransitionplan.

This brief survey will take approximately five minutes to complete and will be available through September 30, 2015. A public open house will be held on Thursday, Aug. 6, 2015, starting at 5 p.m. at the Adams County Government Conference Center, Platte River Room B and C, 4430 South Adams County Parkway, Brighton, Colorado 80601. Interested parties will learn about transition plan progress and will have the opportunity to visit with project staff and provide input on areas of concern. Findings from data collection and input provided will help develop the county's ADA Transition Plan.

Survey and transition plan information can be made available in alternative accessible formats upon request. For information about obtaining an alternative format, contact Jess Hastings at Alfred Benesch & Co. 7979 E. Tufts Avenue, Suite 800, Denver, Colorado 80237, 402.479.2493, or jhastings@benesch.com.

[ADA Transition Plan Survey](#)



Other News in County News Releases

Gov. Hickenlooper Orders flags Lowered for Colorado State Patrol Trooper Jaimie Jursevics

Posted on: November 20, 2015



Absolutely Adams - Fall 2015

Posted on: November 6, 2015



Adams County Videos

Posted on: October 21, 2014

Voters in Adams County, Denver Approve Ballot Question Related to Development at DIA

Posted on: November 3, 2015



Search

All categories



Tools

- RSS
- Notify Me

Categories

- All Categories
- County News Releases





WELCOME

Please take a moment to sign in.

ADA Transition Plan

PUBLIC OPEN HOUSE



Adams County ADA Transition Plan PUBLIC OPEN HOUSE

Adams County Government
Conference Center
Platte River Room B and C
4430 South Adams County Parkway
Brighton, CO 80601

August 6, 2015 | 5:00 p.m.

Thank you for your interest in the development of the Adams County Americans with Disabilities Act (ADA) Transition Plan Project. The County strives to provide an accessible environment for all of its citizens and visitors. Early in 2015, the County contracted with Alfred Benesch & Company through a qualifications-based selection process to assist with the development of an ADA Transition Plan for the transportation network within the County's Public Right-of-Way. This open house is intended to provide information about the plan development process and goals, answer questions about the Transition Plan, and provide interested parties means of providing input towards plan development or prioritization of addressing existing accessibility challenges or issues.

This project is primarily focusing on existing sidewalks and locations where curb ramps exist or should be constructed to create an accessible path. To develop the Transition Plan, we are:

- Documenting Existing Pedestrian Facilities within the County's Transportation Public Right of Way
- Soliciting Input from Interested Parties
- Categorizing Accessibility Challenges
- Identifying Potential Standards, Guidelines, and Training Programs to Improve Accessibility
- Identifying Potential Strategies to Address Accessibility Challenges

Currently, field personnel are documenting the existing sidewalk and curb ramps throughout the County. For sidewalks the primary data being captured or confirmed includes:

Sidewalks

- Width
- Longitudinal and Transverse (Cross) Slope
- Presence of Tripping or Navigation Hazards

Pedestrian Push Buttons

- Location Relative to Sidewalk/ Curb Ramp
- Compliant Sidewalk Area Adjacent to Button

Curb Ramps

- Configuration and Orientation
- Dimensions and Slopes
- Landing Dimensions
- Presence of Tripping or Navigation Hazards
- Presence of Compliant Dome Panels



Adams County **ADA Transition Plan**

PUBLIC OPEN HOUSE

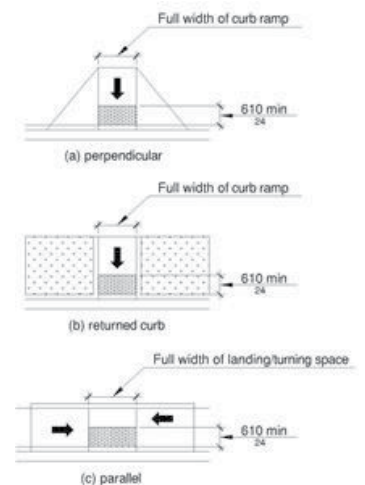
The County has established an initial program for providing information to and accepting input from its citizens and other interested parties. This program includes:

- Transition Plan Website
- Public Meetings
- Targeted Outreach
- Formal Accessibility Concern/Complaint Reporting and Tracking Process

A key component of the Transition Plan will be analyzing the information gathered on the existing facilities and developing potential strategies to improve accessibility. These strategies may include improvements constructed as part of future projects; additional training and education of design and construction personnel; and/or modification of County ordinances, policies, or requirements.

Any interested party may provide input on this process or areas of concern. It is the County's preference that this survey be taken online at www.surveymonkey.com/s/adamsadatransitionplan to help reduce misinterpretation of information and data entry errors. However, if you require this survey in an alternate format (paper, large font, audio), please contact Jess Hastings at 720-473-7576; or jhastings@benesch.com.

We thank you again for your interest in this important project. We look forward to hearing your thoughts and concerns.



Contact

Anna Sparks, PE
Adams County
Project Manager
asparks@adcogov.org
4430 South Adams
County Parkway
Brighton, CO 80601-8218
(720) 523-6859

Jess Hastings, PE
Benesch
Project Manager
jhastings@benesch.com
7979 E. Tufts Avenue,
Suite 800
Denver, CO 80210
(303) 771-6868



Visit the website for updates and ongoing information:
<http://www.co.adams.co.us/index.aspx?nid=1409>



ADA Transition Plan

PUBLIC OPEN HOUSE

AUGUST 2015



Introductions

ADAMS COUNTY REPRESENTATIVES

Anna Sparks, PE
Russell Nelson, PE

ALFRED BENESCH & CO REPRESENTATIVES

Jess Hastings, PE
Steve Banks, PE
Jeff Sockel, PE



Project Overview

- ❑ Goal: Improve Accessibility within Public Right of Way
- ❑ Establish a Framework to Guide Future Activities Affecting Accessibility
- ❑ Provide a Means for Identifying Areas of Concern & Process to Review & Address As Appropriate



Transition Plan Overview

- ❑ Documenting Existing Pedestrian Facilities within the County's Transportation Public Right of Way
- ❑ Soliciting Input from Interested Parties
- ❑ Categorizing Accessibility Challenges
- ❑ Identifying Potential Standards, Guidelines, and Training Programs to Improve Accessibility
- ❑ Identifying Potential Strategies to Address Accessibility Challenges



Documentation - Sidewalks

- Width
- Longitudinal and Transverse (Cross) Slope
- Presence of Tripping or Navigation Hazards



Documentation – Curb Ramps

- Configuration and Orientation
- Dimensions and Slopes
- Landing Dimensions
- Presence of Tripping or Navigation Hazards
- Presence of Compliant Dome Panels



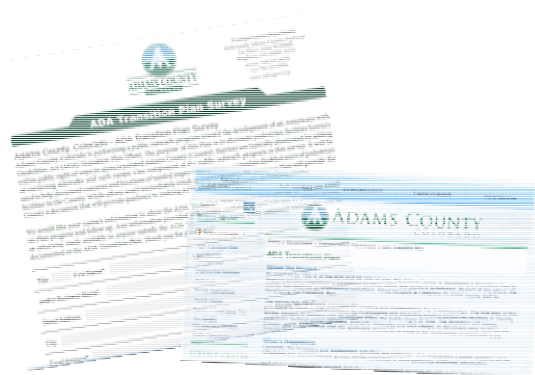
Documentation – Push Buttons

- ❑ Location Relative to Sidewalk/Curb Ramp
- ❑ Compliant Sidewalk Area Adjacent to Button



Information Sharing

- ❑ Transition Plan Website
- ❑ Public Meetings
- ❑ Targeted Outreach
- ❑ Formal Accessibility Concern/Complaint Reporting and Tracking Process



Potential Strategies

- Improvements Constructed as Part of Future Projects
- Additional Training and Education of Design and Construction Personnel
- Modification of County Ordinances, Policies, or Requirements



Thank You

Please Visit the County's Website for Additional Information or to Provide any Input or Suggestions

<http://www.co.adams.co.us/index.aspx?nid=1409>



Engage your community - connect to news, events and information you care about.

[View more information...](#)

Sign In

ADAMS COUNTY

A-Z SERVICES

GOVERNMENT

EMPLOYMENT

NEWSROOM

Search

[home](#) [print](#)

Select Language ▼

Home > Government > Transportation Department > ADA Transition Plan

ADA Transition Plan

Construction Management

Highways

Report A Road Issue

Stormwater Management Division

Traffic Operations

SERVICE CENTER

CODES & ORDINANCES

CONTACT ADAMS COUNTY

PUBLIC RECORDS/MAPS

DEVELOPMENT STANDARDS & REGULATIONS

ADA Transition Plan

About the Project

As required by Title II of the ADA and 28 CFR 35.105, the Adams County is developing a Transition Plan to improve access compliance to pedestrian facilities within the county's jurisdiction. As part of this effort, the county has retained an engineering consultant, Alfred Benesch & Company, to assist county staff in developing the Transition Plan.

The county has developed a process for creating and implementing the Transition Plan. The first step in this process is to conduct self-evaluation by inventorying and assessing existing pedestrian facilities to identify access barriers to persons with disabilities within the public Right-of-Way. The inventory will assess pedestrian facilities along roadways, primarily sidewalks and curb ramps, to document what facilities are present and in compliance with the applicable standards or need to be constructed or improved to be compliant.

Public Open House

A public open house will be held on Tuesday, December 8, 2015, from 6:00 – 7:30 p.m. at the Adams County Government Conference Center, Platte River Room B and C (4430 South Adams County Parkway, Brighton, Colorado 80601). At this event, interested parties will learn about transition plan development, have the opportunity to visit with project staff and review the plan. All comments and questions should be directed to either Jess Hastings or Anna Sparks, Project Managers.

Contact

Anna Sparks, PE, CFM
Adams County Project Manager
asparks@adcogov.org
720.523.6859

Jess Hastings, PE
Project Manager
jhastings@benesch.com
7979 E. Tufts Avenue, Suite 800
Denver, CO 80210
303.771.6868

CONNECT WITH US



Adams County Government Center • 4430 South Adams County Parkway • Brighton, Colorado 80601 • Ph: 303.659.2120 • 800.824.7842

Home • Green • Contact Us • Mobile • Apps Download • Sitemap • Accessibility • Copyright Notices • Privacy and Disclaimer • Powered by CivicPlus



Adams County Government, CO

December 7, 2015 · 🌐

Join us for a public forum on Tuesday, December 8, 2015, from 6:00 – 7:30 p.m. at the Adams County Government Conference Center, 4430 South Adams County Parkway in Brighton, to discuss a mandatory plan on how to improve access and mobility for all residents within the county. For more information about the plan visit: adco.gov.org/adaplan.



👍 Like 💬 Comment ➦ Share

👍 3

Top Comments ▾



Write a comment...



Vicente Eddie Blea ♥ Need to flatten the curbs for wheel chairs.

Like · Reply · December 7, 2015 at 3:13pm

Contacts:

Jim Siedlecki, Director of Public Information
O: 720.523.6793 M: 402.203.5498
jsiedlecki@adcogov.org

Rich Neumann, Communications Manager
O: 720.523.6112 M: 302.299.6797
rneumann@adcogov.org

December 4, 2015

Adams County News & Information

**Adams County Seeks Public Input on Improving
Access and Mobility within County Facilities**

Public Forum on December 8 to help ensure compliance with American Disabilities Act (ADA)

Adams County will host a public forum at the Adams County Government Center on Tuesday, Dec. 8, 6–7:30 p.m., to gather feedback on the county’s plan to ensure access and mobility for all visitors to county facilities. The Adams County Government Center is located at 4430 South Adams County Parkway in Brighton.

“Adams County wants to ensure that all residents enjoy equal, unimpeded access to county facilities—regardless of their level of mobility,” said Anna Sparks, ADA Transition Plan project manager. “To that end, we’ve developed a plan that takes a comprehensive look at potential challenges in each of our properties as well as strategies for addressing any problem areas we’ve identified. We encourage the public to share their feedback on our plan.”

For more information about the plan, visit: www.adcogov.org/adaplan. If you are unable to attend the public forum but wish to share your feedback or ask questions, please contact Anna Sparks at 720.523.6859 or asparks@adcogov.org. Comments will be accepted through Dec. 23, 2015.

--END--



ADA Transition Plan

DRAFT PLAN PRESENTATION TO THE PUBLIC

DECEMBER 2015



Introductions

ADAMS COUNTY REPRESENTATIVES

Anna Sparks, PE, CFM

Valerie Fennell, PHR
(ADA Coordinator)

ALFRED BENESCH & CO REPRESENTATIVES

Jess Hastings, PE

Jeff Sockel, PE



Transition Plan Goals

- Comply with Title II for Pedestrian Facilities in the Public Right-of-Way in Unincorporated Adams County
- Document Existing Conditions
- Establish a Framework for Receiving, Evaluating, and Addressing Grievances
- Establish Standards, Guidelines, and Training Mechanisms to Improve Accessibility
- Identify Project Strategies to Improve Accessibility



Transition Plan Overview

- ADA Coordinator
- Self Evaluation Process & Findings
- Public Involvement
- Public Information Sharing & Grievance Procedure
- Design Standards & Specifications
- Prioritize and Identify Goals, Strategies, & Schedules
- Monitoring & Updating Plan



ADA Coordinator Role

- Monitoring Compliance & Implementation
- Investigating Grievance Complaints
- Addressing ADA Concerns & Questions
- Accessing Undue Burden & Reasonable Accommodations
- Updating Plan



Self Evaluation Components

- Curb Ramp Configuration & Slopes
- Detectable Warning Panel Location & Contrast
- Maneuvering Area Clearance
- Landing Area Configuration & Slopes
- Sidewalk Width & Cross Slope
- Pedestrian Push Button Location & Accessibility



Curb Ramp Findings

- ❑ 2,900 Curb Ramps Locations
- ❑ 2% are Fully Compliant
- ❑ 65% have Improper Landings
- ❑ 78% have Improper Cross Slope or Geometry Along the Ramp or at the Curb Drop
- ❑ 25% have Vertical Obstructions



Sidewalk Findings

- ❑ 314 Miles of Sidewalk
- ❑ 90% Meet Running Slope Requirement Without Any Obstructions
- ❑ 75% have a Width <4'
- ❑ Several Segments have Excessive Cross Slope at Driveway Crossings and Faulted or Separated Joints and Cracks in the Travel Path



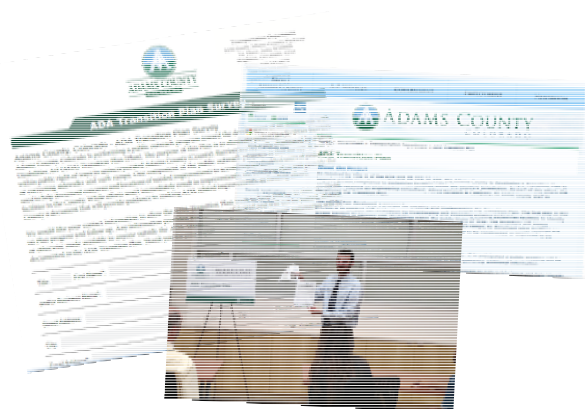
Push Button Findings

- ❑ 100 Push Button Locations
- ❑ 25% are in an Inaccessible Location on the Pole or at an Improper Height



Public Outreach

- ❑ Transition Plan Website
- ❑ User Survey
- ❑ Public Meetings
- ❑ Targeted Contact
- ❑ Formal Accessibility Concern/Complaint Reporting and Tracking Process



Potential Strategies - Programs

- ❑ Training and Education of Design and Construction Personnel
- ❑ Modification of County Policies or Construction Requirements



Potential Strategies - Projects

- ❑ Routine Maintenance Projects
- ❑ Targeted Accessibility Improvement Projects
- ❑ Address as Part of Other Projects
 - New Construction Projects
 - Reconstruction Projects
 - Major Rehabilitation Projects



Grievance Process

1. Complaint filed by an Affected Individual or Their Designated Representative
2. Investigation by the County ADA Coordinator or Designee
3. Follow-up Contact with the Affected Individual or Designated Representative to Explain the Findings and/or Measures Being Taken

NOTE: Compliant Dismissal Guidelines are also Identified



Implementation Priorities

1. Locations Where Adjacent Roadway or Infrastructure Improvements are Taking Place
2. Locations in Close Proximity to Public Facilities and High Pedestrian Traffic Areas (e.g., Schools, Hospitals, Rec. Facilities, Parks, etc.)
3. Locations in Targeted Neighborhood Zones
4. Locations Having a Higher Degree of Non-compliance or More Significant Barriers to Accessibility
5. All Other Locations Not Listed Above as Funding and Resources are Available

NOTE: Locations Identified from the Grievance Process Will Be Prioritized on a Case-by-Case Basis



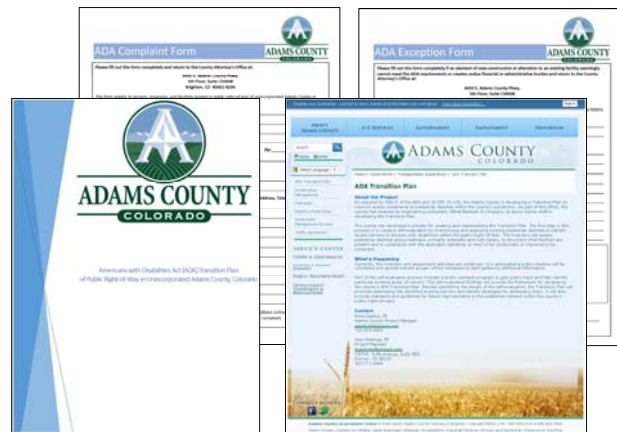
Potential Funding Options

- Annual Capital Improvement Plan & Maintenance Projects
- Federal Aid or Grants (e.g., STIP, HSIP, SRTS, CDBG, TEA)
- Intergovernmental Agreement (IGA)
- Bonding



Going Forward...

- Proactively Improve Accessibility
- Address Grievances when Identified
- Periodic Review and Update of the Plan



Thank You

Questions?





ADA Transition Plan Public Open House

Adams County Government Conference Center
4430 South Adams County Parkway, Brighton, CO 80601
Tuesday, December 8, 2015



Comment Form

Do you have any comments or questions about the ADA Transition Plan?

If so, we would like to hear from you.

Please write your comments in the space below and return them to Alfred Benesch & Company.
You can drop this form off on your way out, or you may take it with you and mail it later.

Thank you for your participation!

Jess Hastings, PE
Alfred Benesch & Company
7979 E. Tufts Avenue, Suite 800
Denver, CO 80237
phone: 303-771-6868
email: jhastings@benesch.com

Anna Sparks, PE, CFM
Adams County
4430 South Adams Parkway
Brighton, CO 80601
phone: 720-523-6859
email: asparks@adcogov.org

Lined area for writing comments.

If you are willing, please provide your complete contact information to allow us to follow-up with you on any questions or concerns:

- Name
- Street
- City, Zip
- Email
- Phone

Thank you for your interest and participation!

Place
Stamp
Here

Jess Hastings, PE
Alfred Benesch & Company
7979 E. Tufts Avenue, Suite 800
Denver, CO 80237

Fold -----

Adams County ADA Transition Plan PUBLIC OPEN HOUSE

Adams County Government
Conference Center
Platte River Room B and C
4430 South Adams County Parkway
Brighton, CO 80601

December 8, 2015 | 6:00 p.m.

Thank you for your interest in the development of the Adams County Americans with Disabilities Act (ADA) Transition Plan Project. The County strives to provide an accessible environment for all of its citizens and visitors. Early in 2015, the County contracted with Alfred Benesch & Company through a qualifications-based selection process to assist with the development of an ADA Transition Plan for the transportation network within the County's Public Right-of-Way. This open house is intended to provide information about the plan development process and goals, answer questions about the Transition Plan, and provide interested parties means of providing input towards plan development or prioritization of addressing existing accessibility challenges or issues.

This project is primarily focusing on existing sidewalks and locations where curb ramps exist or should be constructed to create an accessible path. To develop the Transition Plan, we are:

- Documented Existing Pedestrian Facilities within the County's Transportation Public Right of Way
- Solicited Input from Interested Parties
- Quantified Accessibility Challenges
- Identified Potential Standards, Guidelines, and Training Programs to Improve Accessibility
- Identified Potential Strategies to Address Accessibility Challenges

During the existing condition surveys, crews documented the following accessibility characteristics along target roadways throughout the County.

Sidewalks

- 314 Miles of Sidewalk
- 90% Meet Running Slope Requirement Without Any Obstructions
- 75% have a Width <4'
- Several Segments have Excessive Cross Slope at Driveway Crossings and Faulted or Separated Joints and Cracks in the Travel Path

Pedestrian Push Buttons

- 100 Push Buttons Locations
- 25% are in an Inaccessible Location on the Pole or at an Improper Height

Curb Ramps

- 2,900 Curb Ramp Locations
- 2% are Fully Compliant
- 65% have Improper Landings
- 78% have Improper Cross Slope or Geometry Along the Ramp or at the Curb Drop
- 25% have Vertical Obstructions



Adams County ADA Transition Plan

PUBLIC OPEN HOUSE

The County has established a program for providing information to and accepting input from its citizens and other interested parties. This program includes:

- Transition Plan Website
- Public Meetings
- Targeted Outreach
- Formal Accessibility Concern/Complaint Reporting and Tracking Process

A key component of the Transition Plan includes identifying potential strategies to improve accessibility. These strategies include improvements constructed as part of future projects; additional training and education of design and construction personnel; and/or modification of County ordinances, policies, or requirements.

Any interested party may provide input on the draft Plan or areas of concern. The County has established a website to share information and a Grievance Process to allow individuals or their representative to identify areas of concern for the County to investigate and remedy as appropriate. Please feel free to contact Jess Hastings, Anna Sparks, or the County ADA Coordinator directly with any concerns, questions, or comments. Their contact information is provided below.

We thank you again for your interest in this important project. We look forward to hearing your thoughts and concerns.

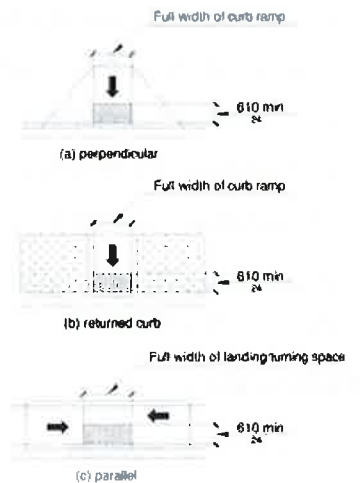
Contact

Anna Sparks, PE, CFM
Adams County
Project Manager
asparks@adcogov.org
4430 South Adams
County Parkway
Brighton, CO 80601-8218
(720) 523-6859

Jess Hastings, PE
Benesch
Project Manager
jhastings@benesch.com
7979 E. Tufts Avenue,
Suite 800
Denver, CO 80210
(303) 771-6868

ADA Coordinator
County Attorney's Office
4430 South Adams
County Parkway
5th Floor, Suite C5000B
Brighton, CO 80601-8206
(720) 523-6116

Visit the website for updates and ongoing information:
<http://www.adcogov.org/>
keyword: ADA Transition



In addition to the County's standard public notification process, the following were specifically requested to review and provide comment on the Plan.

City of Arvada
8101 Ralston Road
P.O. Box 8101
Arvada, CO 80001-8101

City of Aurora
15151 E. Alameda Pkwy.
Aurora CO 80012

Town of Bennett
355 4th St.
Bennett, CO 80102

City of Brighton
22 S. 4th Ave.
Brighton, CO 80601

City of Commerce City
7887 E. 60th Ave.
Commerce City, CO 80022

City of Federal Heights
2380 W 90th Avenue
Federal Heights, CO 80260

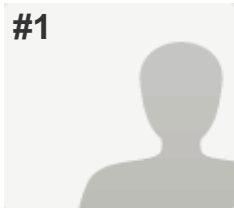
City of Northglenn
11701 Community Center Drive
P.O. Box 330061
Northglenn, CO 80233

City of Thornton
9500 Civic Center Drive
Thornton, CO 80229

City of Westminster
4800 W. 92nd Ave.
Westminster, Co 80031

Rocky Mountain ADA Center
3630 Sinton Road, Suite 103
Colorado Springs, CO 80907

#1



INCOMPLETE

Collector: Web Link 1 (Web Link)
Started: Tuesday, July 21, 2015 9:12:49 PM
Last Modified: Tuesday, July 21, 2015 9:13:15 PM
Time Spent: 00:00:26
IP Address: 67.172.157.233

PAGE 2

Q1: Have you experienced physical barriers or constraints on a pedestrian path you currently use or would like to use? Yes

PAGE 3

Q2: Have you encountered street segments or locations where sidewalks are missing, inaccessible, or in poor condition? Yes

PAGE 4

Q3: Please provide the street name(s), segment(s) of street, side(s) of street, and describe your concerns. (For Example: Washington Street between 58th and 60th, east side – sidewalk has heaved and settled making it difficult to use.) *Respondent skipped this question*

PAGE 5

Q4: Have you encountered locations where curb ramps are missing, inaccessible, or in poor condition? *Respondent skipped this question*

PAGE 6

Q5: Please provide intersecting street names, location(s) and describe your concerns (For Example: Washington Street and E 58th Avenue, southwest and southeast corners – missing curb ramps.) *Respondent skipped this question*

PAGE 7

Q6: Have you encountered intersections or mid-block crossings, where medians or traffic signals affect your ability to cross the street?

Respondent skipped this question

PAGE 8

Q7: Please provide intersecting street names, location(s) and describe your concerns. (For Example: Pedestrian traffic signal on E 72nd Avenue, just west of Cherry Street. A concrete pad is needed at the north push button.)

Respondent skipped this question

PAGE 9

Q8: Have you encountered any physical obstructions like roots, trees, branches, bushes, retaining walls, signs, fire hydrants or other?

Respondent skipped this question

PAGE 10

Q9: Please provide intersecting street names, location(s) and describe your concerns. (For Example: Tree roots in front of 7401 Broadway Street have created a sidewalk displacement of more than one-half an inch.)

Respondent skipped this question

PAGE 11

Q10: Do you have any more specific or general comments that you feel the ADA Transition Plan team should consider related to pedestrian facilities?

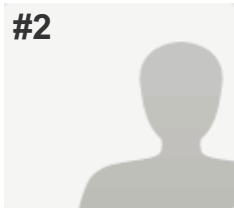
Respondent skipped this question

PAGE 12

Q11: Please provide your contact information to allow the ADA Transition Plan team to keep you up to date on plan progress and follow up if there are questions related to your concerns. Any information shared will remain confidential and will not be posted, shared, or otherwise made available to anyone outside the ADA Transition Plan team. Thank you for your input!

Respondent skipped this question

#2



COMPLETE

Collector: Web Link 1 (Web Link)
Started: Wednesday, July 22, 2015 7:45:57 AM
Last Modified: Wednesday, July 22, 2015 7:46:26 AM
Time Spent: 00:00:29
IP Address: 73.153.165.102

PAGE 2

Q1: Have you experienced physical barriers or constraints on a pedestrian path you currently use or would like to use? No

PAGE 3

Q2: Have you encountered street segments or locations where sidewalks are missing, inaccessible, or in poor condition? *Respondent skipped this question*

PAGE 4

Q3: Please provide the street name(s), segment(s) of street, side(s) of street, and describe your concerns. (For Example: Washington Street between 58th and 60th, east side – sidewalk has heaved and settled making it difficult to use.) *Respondent skipped this question*

PAGE 5

Q4: Have you encountered locations where curb ramps are missing, inaccessible, or in poor condition? *Respondent skipped this question*

PAGE 6

Q5: Please provide intersecting street names, location(s) and describe your concerns (For Example: Washington Street and E 58th Avenue, southwest and southeast corners – missing curb ramps.) *Respondent skipped this question*

PAGE 7

Q6: Have you encountered intersections or mid-block crossings, where medians or traffic signals affect your ability to cross the street?

Respondent skipped this question

PAGE 8

Q7: Please provide intersecting street names, location(s) and describe your concerns. (For Example: Pedestrian traffic signal on E 72nd Avenue, just west of Cherry Street. A concrete pad is needed at the north push button.)

Respondent skipped this question

PAGE 9

Q8: Have you encountered any physical obstructions like roots, trees, branches, bushes, retaining walls, signs, fire hydrants or other?

Respondent skipped this question

PAGE 10

Q9: Please provide intersecting street names, location(s) and describe your concerns. (For Example: Tree roots in front of 7401 Broadway Street have created a sidewalk displacement of more than one-half an inch.)

Respondent skipped this question

PAGE 11

Q10: Do you have any more specific or general comments that you feel the ADA Transition Plan team should consider related to pedestrian facilities?

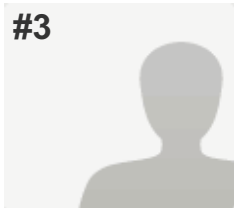
Respondent skipped this question

PAGE 12

Q11: Please provide your contact information to allow the ADA Transition Plan team to keep you up to date on plan progress and follow up if there are questions related to your concerns. Any information shared will remain confidential and will not be posted, shared, or otherwise made available to anyone outside the ADA Transition Plan team. Thank you for your input!

Respondent skipped this question

#3



INCOMPLETE

Collector: Web Link 1 (Web Link)
Started: Wednesday, July 22, 2015 8:35:37 AM
Last Modified: Wednesday, July 22, 2015 8:35:58 AM
Time Spent: 00:00:21
IP Address: 67.230.204.5

PAGE 2

Q1: Have you experienced physical barriers or constraints on a pedestrian path you currently use or would like to use? Yes

PAGE 3

Q2: Have you encountered street segments or locations where sidewalks are missing, inaccessible, or in poor condition? Yes

PAGE 4

Q3: Please provide the street name(s), segment(s) of street, side(s) of street, and describe your concerns. (For Example: Washington Street between 58th and 60th, east side – sidewalk has heaved and settled making it difficult to use.) *Respondent skipped this question*

PAGE 5

Q4: Have you encountered locations where curb ramps are missing, inaccessible, or in poor condition? *Respondent skipped this question*

PAGE 6

Q5: Please provide intersecting street names, location(s) and describe your concerns (For Example: Washington Street and E 58th Avenue, southwest and southeast corners – missing curb ramps.) *Respondent skipped this question*

PAGE 7

Q6: Have you encountered intersections or mid-block crossings, where medians or traffic signals affect your ability to cross the street?

Respondent skipped this question

PAGE 8

Q7: Please provide intersecting street names, location(s) and describe your concerns. (For Example: Pedestrian traffic signal on E 72nd Avenue, just west of Cherry Street. A concrete pad is needed at the north push button.)

Respondent skipped this question

PAGE 9

Q8: Have you encountered any physical obstructions like roots, trees, branches, bushes, retaining walls, signs, fire hydrants or other?

Respondent skipped this question

PAGE 10

Q9: Please provide intersecting street names, location(s) and describe your concerns. (For Example: Tree roots in front of 7401 Broadway Street have created a sidewalk displacement of more than one-half an inch.)

Respondent skipped this question

PAGE 11

Q10: Do you have any more specific or general comments that you feel the ADA Transition Plan team should consider related to pedestrian facilities?

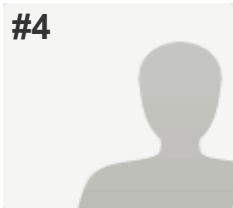
Respondent skipped this question

PAGE 12

Q11: Please provide your contact information to allow the ADA Transition Plan team to keep you up to date on plan progress and follow up if there are questions related to your concerns. Any information shared will remain confidential and will not be posted, shared, or otherwise made available to anyone outside the ADA Transition Plan team. Thank you for your input!

Respondent skipped this question

#4



COMPLETE

Collector: Web Link 1 (Web Link)
Started: Wednesday, August 05, 2015 1:34:50 PM
Last Modified: Wednesday, August 05, 2015 1:35:00 PM
Time Spent: 00:00:10
IP Address: 65.113.226.130

PAGE 2

Q1: Have you experienced physical barriers or constraints on a pedestrian path you currently use or would like to use? No

PAGE 3

Q2: Have you encountered street segments or locations where sidewalks are missing, inaccessible, or in poor condition? *Respondent skipped this question*

PAGE 4

Q3: Please provide the street name(s), segment(s) of street, side(s) of street, and describe your concerns. (For Example: Washington Street between 58th and 60th, east side – sidewalk has heaved and settled making it difficult to use.) *Respondent skipped this question*

PAGE 5

Q4: Have you encountered locations where curb ramps are missing, inaccessible, or in poor condition? *Respondent skipped this question*

PAGE 6

Q5: Please provide intersecting street names, location(s) and describe your concerns (For Example: Washington Street and E 58th Avenue, southwest and southeast corners – missing curb ramps.) *Respondent skipped this question*

PAGE 7

Q6: Have you encountered intersections or mid-block crossings, where medians or traffic signals affect your ability to cross the street?

Respondent skipped this question

PAGE 8

Q7: Please provide intersecting street names, location(s) and describe your concerns. (For Example: Pedestrian traffic signal on E 72nd Avenue, just west of Cherry Street. A concrete pad is needed at the north push button.)

Respondent skipped this question

PAGE 9

Q8: Have you encountered any physical obstructions like roots, trees, branches, bushes, retaining walls, signs, fire hydrants or other?

Respondent skipped this question

PAGE 10

Q9: Please provide intersecting street names, location(s) and describe your concerns. (For Example: Tree roots in front of 7401 Broadway Street have created a sidewalk displacement of more than one-half an inch.)

Respondent skipped this question

PAGE 11

Q10: Do you have any more specific or general comments that you feel the ADA Transition Plan team should consider related to pedestrian facilities?

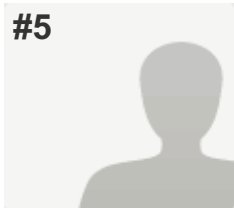
Respondent skipped this question

PAGE 12

Q11: Please provide your contact information to allow the ADA Transition Plan team to keep you up to date on plan progress and follow up if there are questions related to your concerns. Any information shared will remain confidential and will not be posted, shared, or otherwise made available to anyone outside the ADA Transition Plan team. Thank you for your input!

Respondent skipped this question

#5



INCOMPLETE

Collector: Web Link 1 (Web Link)
Started: Wednesday, August 12, 2015 10:33:06 AM
Last Modified: Wednesday, August 12, 2015 10:36:04 AM
Time Spent: 00:02:58
IP Address: 104.218.81.9

PAGE 2

Q1: Have you experienced physical barriers or constraints on a pedestrian path you currently use or would like to use? No

PAGE 3

Q2: Have you encountered street segments or locations where sidewalks are missing, inaccessible, or in poor condition? Yes

PAGE 4

Q3: Please provide the street name(s), segment(s) of street, side(s) of street, and describe your concerns. (For Example: Washington Street between 58th and 60th, east side – sidewalk has heaved and settled making it difficult to use.) *Respondent skipped this question*

PAGE 5

Q4: Have you encountered locations where curb ramps are missing, inaccessible, or in poor condition? Yes

PAGE 6

Q5: Please provide intersecting street names, location(s) and describe your concerns (For Example: Washington Street and E 58th Avenue, southwest and southeast corners – missing curb ramps.) *Respondent skipped this question*

PAGE 7

Q6: Have you encountered intersections or mid-block crossings, where medians or traffic signals affect your ability to cross the street?

Respondent skipped this question

PAGE 8

Q7: Please provide intersecting street names, location(s) and describe your concerns. (For Example: Pedestrian traffic signal on E 72nd Avenue, just west of Cherry Street. A concrete pad is needed at the north push button.)

Respondent skipped this question

PAGE 9

Q8: Have you encountered any physical obstructions like roots, trees, branches, bushes, retaining walls, signs, fire hydrants or other?

Respondent skipped this question

PAGE 10

Q9: Please provide intersecting street names, location(s) and describe your concerns. (For Example: Tree roots in front of 7401 Broadway Street have created a sidewalk displacement of more than one-half an inch.)

Respondent skipped this question

PAGE 11

Q10: Do you have any more specific or general comments that you feel the ADA Transition Plan team should consider related to pedestrian facilities?

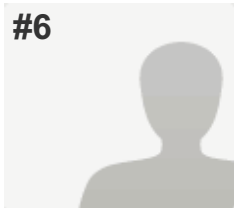
Respondent skipped this question

PAGE 12

Q11: Please provide your contact information to allow the ADA Transition Plan team to keep you up to date on plan progress and follow up if there are questions related to your concerns. Any information shared will remain confidential and will not be posted, shared, or otherwise made available to anyone outside the ADA Transition Plan team. Thank you for your input!

Respondent skipped this question

#6



COMPLETE

Collector: Web Link 1 (Web Link)
Started: Monday, August 17, 2015 9:04:34 AM
Last Modified: Monday, August 17, 2015 9:07:58 AM
Time Spent: 00:03:24
IP Address: 75.166.176.108

PAGE 2

Q1: Have you experienced physical barriers or constraints on a pedestrian path you currently use or would like to use? Yes

PAGE 3

Q2: Have you encountered street segments or locations where sidewalks are missing, inaccessible, or in poor condition? Yes

PAGE 4

Q3: Please provide the street name(s), segment(s) of street, side(s) of street, and describe your concerns. (For Example: Washington Street between 58th and 60th, east side – sidewalk has heaved and settled making it difficult to use.)

5235 Newton 80221

PAGE 5

Q4: Have you encountered locations where curb ramps are missing, inaccessible, or in poor condition? Yes

PAGE 6

Q5: Please provide intersecting street names, location(s) and describe your concerns (For Example: Washington Street and E 58th Avenue, southwest and southeast corners – missing curb ramps.)

Carl Park area. Newton is my street

PAGE 7

Q6: Have you encountered intersections or mid-block crossings, where medians or traffic signals affect your ability to cross the street? Yes

PAGE 8

Q7: Please provide intersecting street names, location(s) and describe your concerns. (For Example: Pedestrian traffic signal on E 72nd Avenue, just west of Cherry Street. A concrete pad is needed at the north push button.)

52nd and Lowell

PAGE 9

Q8: Have you encountered any physical obstructions like roots, trees, branches, bushes, retaining walls, signs, fire hydrants or other? No

PAGE 10

Q9: Please provide intersecting street names, location(s) and describe your concerns. (For Example: Tree roots in front of 7401 Broadway Street have created a sidewalk displacement of more than one-half an inch.) *Respondent skipped this question*

PAGE 11

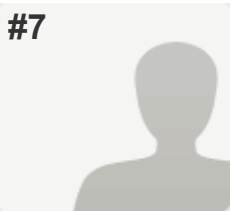
Q10: Do you have any more specific or general comments that you feel the ADA Transition Plan team should consider related to pedestrian facilities? *Respondent skipped this question*

PAGE 12

Q11: Please provide your contact information to allow the ADA Transition Plan team to keep you up to date on plan progress and follow up if there are questions related to your concerns. Any information shared will remain confidential and will not be posted, shared, or otherwise made available to anyone outside the ADA Transition Plan team. Thank you for your input!

Name: [REDACTED]
Address: [REDACTED]
City/Town: Denver
State: CO
ZIP: [REDACTED]
Country: United States
Email Address: [REDACTED]
Phone Number: [REDACTED]

#7



INCOMPLETE

Collector: Web Link 1 (Web Link)
Started: Friday, August 21, 2015 7:55:08 AM
Last Modified: Friday, August 21, 2015 7:59:43 AM
Time Spent: 00:04:35
IP Address: 65.114.219.190

PAGE 2

Q1: Have you experienced physical barriers or constraints on a pedestrian path you currently use or would like to use?

Respondent skipped this question

PAGE 3

Q2: Have you encountered street segments or locations where sidewalks are missing, inaccessible, or in poor condition?

Respondent skipped this question

PAGE 4

Q3: Please provide the street name(s), segment(s) of street, side(s) of street, and describe your concerns. (For Example: Washington Street between 58th and 60th, east side – sidewalk has heaved and settled making it difficult to use.)

Respondent skipped this question

PAGE 5

Q4: Have you encountered locations where curb ramps are missing, inaccessible, or in poor condition?

Respondent skipped this question

PAGE 6

Q5: Please provide intersecting street names, location(s) and describe your concerns (For Example: Washington Street and E 58th Avenue, southwest and southeast corners – missing curb ramps.)

Respondent skipped this question

PAGE 7

Q6: Have you encountered intersections or mid-block crossings, where medians or traffic signals affect your ability to cross the street?

Respondent skipped this question

PAGE 8

Q7: Please provide intersecting street names, location(s) and describe your concerns. (For Example: Pedestrian traffic signal on E 72nd Avenue, just west of Cherry Street. A concrete pad is needed at the north push button.)

Respondent skipped this question

PAGE 9

Q8: Have you encountered any physical obstructions like roots, trees, branches, bushes, retaining walls, signs, fire hydrants or other?

Respondent skipped this question

PAGE 10

Q9: Please provide intersecting street names, location(s) and describe your concerns. (For Example: Tree roots in front of 7401 Broadway Street have created a sidewalk displacement of more than one-half an inch.)

Respondent skipped this question

PAGE 11

Q10: Do you have any more specific or general comments that you feel the ADA Transition Plan team should consider related to pedestrian facilities?

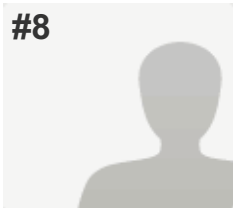
Respondent skipped this question

PAGE 12

Q11: Please provide your contact information to allow the ADA Transition Plan team to keep you up to date on plan progress and follow up if there are questions related to your concerns. Any information shared will remain confidential and will not be posted, shared, or otherwise made available to anyone outside the ADA Transition Plan team. Thank you for your input!

Respondent skipped this question

#8



INCOMPLETE

Collector: Web Link 1 (Web Link)
Started: Monday, September 21, 2015 4:10:25 PM
Last Modified: Monday, September 21, 2015 4:10:48 PM
Time Spent: 00:00:23
IP Address: 198.239.83.187

PAGE 2

Q1: Have you experienced physical barriers or constraints on a pedestrian path you currently use or would like to use? No

PAGE 3

Q2: Have you encountered street segments or locations where sidewalks are missing, inaccessible, or in poor condition? *Respondent skipped this question*

PAGE 4

Q3: Please provide the street name(s), segment(s) of street, side(s) of street, and describe your concerns. (For Example: Washington Street between 58th and 60th, east side – sidewalk has heaved and settled making it difficult to use.) *Respondent skipped this question*

PAGE 5

Q4: Have you encountered locations where curb ramps are missing, inaccessible, or in poor condition? *Respondent skipped this question*

PAGE 6

Q5: Please provide intersecting street names, location(s) and describe your concerns (For Example: Washington Street and E 58th Avenue, southwest and southeast corners – missing curb ramps.) *Respondent skipped this question*

PAGE 7

Q6: Have you encountered intersections or mid-block crossings, where medians or traffic signals affect your ability to cross the street?

Respondent skipped this question

PAGE 8

Q7: Please provide intersecting street names, location(s) and describe your concerns. (For Example: Pedestrian traffic signal on E 72nd Avenue, just west of Cherry Street. A concrete pad is needed at the north push button.)

Respondent skipped this question

PAGE 9

Q8: Have you encountered any physical obstructions like roots, trees, branches, bushes, retaining walls, signs, fire hydrants or other?

Respondent skipped this question

PAGE 10

Q9: Please provide intersecting street names, location(s) and describe your concerns. (For Example: Tree roots in front of 7401 Broadway Street have created a sidewalk displacement of more than one-half an inch.)

Respondent skipped this question

PAGE 11

Q10: Do you have any more specific or general comments that you feel the ADA Transition Plan team should consider related to pedestrian facilities?

Respondent skipped this question

PAGE 12

Q11: Please provide your contact information to allow the ADA Transition Plan team to keep you up to date on plan progress and follow up if there are questions related to your concerns. Any information shared will remain confidential and will not be posted, shared, or otherwise made available to anyone outside the ADA Transition Plan team. Thank you for your input!

Respondent skipped this question



Transportation Department
4430 South Adams County Parkway
1st Floor, Suite W2000B
Brighton, CO 80601-8218
PHONE 720.523.6875
FAX 720.523.6996
www.adcogov.org

ADA Transition Plan Survey

Adams County, Colorado - ADA Transition Plan Survey

Adams County, Colorado is performing a public outreach program toward the development of an Americans with Disabilities Act (ADA) Transition Plan (Plan). The purpose of this Plan is to eliminate pedestrian facilities barriers within public right-of-ways in unincorporated Adams County (County). Barriers are typically eliminated by adding or correcting sidewalks and curb ramps. One component of the public outreach program is this survey. It will be used to help document concerns and locations of needed improvements to accommodate disabled users of pedestrian facilities in the County. While efforts won't immediately result in improvements, the resulting Plan will provide the County a document that will provide guidance to making ADA related improvements, as funding allows.

We would like your contact information to allow the ADA Transition Plan team to keep you up to date via email on Plan progress and follow up. Any information provided will remain confidential and will not be posted, shared, or otherwise made available to anyone outside the ADA Transition Plan team. Only comment summaries will be documented in the ADA Transition Plan. Thank you for your input!

Title: _____ First Name*: _____ Last Name*: _____

and/or Business Name*: _____

Street Address: _____

City: Weld State: CO Zip: _____ Phone Number: _____

Email Address*: _____ (BCC distribution emails only)

1. Have you experienced physical barriers or constraints on a pedestrian path you currently use or would like to use?

Yes No

If yes, please provide more information relating to your experiences by answering the next 4 questions. If no, jump to question 6.

Roads in our business area are hardly wide enough for 2 cars to pass side. Employees are afraid to walk or ride bikes. Side walks or bike lanes are needed.



Adams County, Colorado - ADA Transition Plan Survey (continued)

2. Have you encountered street segments or locations where sidewalks are missing, inaccessible, or in poor condition?

Yes No

If yes, please provide the street name(s), segment(s) of street, side(s) of street, and describe your concerns:

There are no sidewalks in our community.
It is a safety & access concern for our employees.

3. Have you encountered locations where curb ramps are missing, inaccessible, or in poor condition?

Yes No

If yes, please provide intersecting street names, location(s) and describe your concerns:

We have no curbs

4. Have you encountered intersections or mid-block crossings, where medians or traffic signals affect your ability to cross the street?

Yes No

If yes, please provide intersecting street names, location(s) and describe your concerns:

It is not safe for our employees that take public transportation to cross the street

5. Have you encountered any physical obstructions like roots, trees, branches, bushes, retaining walls, signs, fire hydrants or other?

Yes No

If yes, please provide street name(s), segment(s) of street, side(s) of street, and describe your concerns:

There are trees/bushes that stick out.
Cars must pull half way through intersection

6. Do you have any more specific or general comments that you feel the ADA Transition Plan team should consider related to pedestrian facilities?

I also think that in ~~addition~~
addition to sidewalks + curb cuts
lighting / safety & access are also
very important.

Thank you for participating in this survey!

Please mail hard copies to Jess Hastings at 7979 E. Tufts Avenue, Suite 800, Denver, Colorado 80237



Transportation Department
4430 South Adams County Parkway
1st Floor, Suite W2000B
Brighton, CO 80601-8218
PHONE 720.523.6875
FAX 720.523.6996
www.adcogov.org

ADA Transition Plan Survey

Adams County, Colorado - ADA Transition Plan Survey

Adams County, Colorado is performing a public outreach program toward the development of an Americans with Disabilities Act (ADA) Transition Plan (Plan). The purpose of this Plan is to eliminate pedestrian facilities barriers within public right-of-ways in unincorporated Adams County (County). Barriers are typically eliminated by adding or correcting sidewalks and curb ramps. One component of the public outreach program is this survey. It will be used to help document concerns and locations of needed improvements to accommodate disabled users of pedestrian facilities in the County. While efforts won't immediately result in improvements, the resulting Plan will provide the County a document that will provide guidance to making ADA related improvements, as funding allows.

We would like your contact information to allow the ADA Transition Plan team to keep you up to date via email on Plan progress and follow up. Any information provided will remain confidential and will not be posted, shared, or otherwise made available to anyone outside the ADA Transition Plan team. Only comment summaries will be documented in the ADA Transition Plan. Thank you for your input!

Title: [REDACTED] First Name*: [REDACTED] Last Name*: [REDACTED]

and/or Business Name*: [REDACTED]

Street Address: [REDACTED]

City: Denver State: Co Zip: [REDACTED] Phone Number: [REDACTED]

Email Address*: [REDACTED] (BCC distribution emails only)

1. Have you experienced physical barriers or constraints on a pedestrian path you currently use or would like to use?

Yes No

If yes, please provide more information relating to your experiences by answering the next 4 questions. If no, jump to question 6.

It is very difficult to get onto path from Yub to Washington Street.



Adams County, Colorado - ADA Transition Plan Survey (continued)

2. Have you encountered street segments or locations where sidewalks are missing, inaccessible, or in poor condition?

Yes No

If yes, please provide the street name(s), segment(s) of street, side(s) of street, and describe your concerns:

73rd Avenue
74th Avenue
Race Street

Road designed back in early 1900's and has not been widened. We cannot walk or ride a bike or actually drive safely down these streets.

3. Have you encountered locations where curb ramps are missing, inaccessible, or in poor condition?

Yes No

If yes, please provide intersecting street names, location(s) and describe your concerns:

Cross walks on York & 224 as well as Washington. Very dangerous.

4. Have you encountered intersections or mid-block crossings, where medians or traffic signals affect your ability to cross the street?

Yes No

If yes, please provide intersecting street names, location(s) and describe your concerns:

5. Have you encountered any physical obstructions like roots, trees, branches, bushes, retaining walls, signs, fire hydrants or other?

Yes No

If yes, please provide street name(s), segment(s) of street, side(s) of street, and describe your concerns:

Ditches - 73rd
74th
Race

6. Do you have any more specific or general comments that you feel the ADA Transition Plan team should consider related to pedestrian facilities?

A very timely study. As it residential or business people should feel safe when walking on the streets. Create a partnership with CPT.

Thank you for participating in this survey!

Please mail hard copies to Jess Hastings at 7979 E. Tufts Avenue, Suite 800, Denver, Colorado 80237



APPENDIX H – COMPLAINT & GRIEVANCE PROCEDURES

2. COMPLAINT PROCEDURE

ADA/Section 504 Complaint Procedure

If you feel that you have not been able to access an Adams County program or service because of lack of accessibility, or that you have been discriminated against because of your disability, please fill out a written ADA Complaint Form.

Step 1: An ADA Complaint Form may be filed in writing to:

Adams County ADA/504 Coordinator
4430 South Adams County Parkway, Suite C5000B
Brighton, CO 80601-8206
720-523-6882 (phone)
720-523-6114 (fax)
Email: ADA504@adcogov.org

Complaints should contain the name and address of the person filing the complaint and describe the alleged violation of Title II of the Americans with Disabilities Act or Section 504 of the Rehabilitation Act, if appropriate, and the remedy the person believes is appropriate. A complaint must be filed within 30 calendar days after the complainant becomes aware, or should have become aware, of the alleged violation. Assistance with and/or a modification to filling out the ADA Complaint Form will be provided to those persons with disabilities requesting such assistance and/or modification.

Step 2: An investigation will follow the filing of a complaint. The ADA/504 Coordinator shall conduct the investigation unless such complaint alleges misconduct on the part of the ADA/504 Coordinator.

Step 3: Upon conclusion of the investigation a written determination shall issue within forty-five (45) working days of the filing of the ADA Complaint Form as to the validity of the complaint and description of the resolution. A copy of the written determination will be forwarded to the complainant and the affected division director.

Filed Complaints:

The ADA/504 Coordinator shall maintain the confidentiality of all files and records of any complaint, unless disclosure is authorized or required by law. The entire record shall be maintained for a period of three years.

Filing a complaint with the ADA/504 Coordinator does not preclude a complainant from filing a complaint or seeking relief from any other federal or state agency with jurisdiction over such matters.



ADA/504 Coordinator
 4430 South Adams County Pkwy
 County Attorney's Office, C5000B
 Brighton, CO 80601-8206
 Phone: 720-523-6882
 Fax: 720-523-6114
 Email: ADA504@adcogov.org

ADA Complaint Form

If you feel that you have not been able to access an Adams County program or service because of lack of accessibility, or that you have been discriminated against because of your disability, please fill out this form completely in print or type. Sign and return to the ADA Coordinator via email, fax, mail or in person within 30 days of the alleged incident. Complaints are processed as quickly as possible – please refer to the ADA Complaint Procedure for more information. If you require assistance completing this form, please contact the ADA Coordinator.

Complainant Information:

FIRST NAME		LAST NAME	
DAYTIME PHONE (Please include area code)		ALTERNATE PHONE (Please include area code)	
MAILING ADDRESS			CITY
STATE	ZIP CODE	EMAIL ADDRESS (If available)	

How would you like us to contact you?

Email Mail Telephone Other (specify) _____

Who do you believe discriminated against you?

NAME OF PERSON(S) COMPLAINT IS ABOUT	DATE(S) DISCRIMINATION OCCURRED
DEPARTMENT/OFFICE	PHONE (Please include area code)
BUILDING/LOCATION OF WHERE INCIDENT(S) OCCURED	

Describe briefly the reason for the complaint. How and why do you believe that you have been (or someone else has been) discriminated against? Please be as specific as possible. Attach additional documentation if needed.

Have efforts been made to resolve this complaint directly through the applicable department/office?

Yes No

If yes, what is the status of the complaint?

Has the complaint been filed with or do you intend to file the complaint with any Federal, State, or local civil rights agency or court?

Yes, a complaint has been filed Yes, I intend to file a complaint No

If yes:

Agency or Court name

Date filed

Mailing Address, City, State, ZIP Code

Agency contact

Agency phone number | Other phone number

Email address

Please sign and date this request. You do not need to sign if submitting this form by email, just type your name.

Signature

Date

Parent or Legal Guardian may sign on behalf of minor child.
Legal Guardian, Power of Attorney, or equivalent may sign on behalf of adult documentation is required.

For Administrative Use Only:

Action taken:

Date received

ADA/504 Coordinator signature

Date

APPENDIX I – ADA DESIGN AND CONSTRUCTION EXCEPTION FORM



ADA Design and Construction Exception Form

Please fill out this form completely if an element of new construction or alteration to an existing facility seemingly cannot meet the ADA requirements or creates undue financial or administrative burden and return to the County Attorney's Office at:

4430 S. Adams County Pkwy.
5th Floor, Suite C5000B
Brighton, CO 80601-8206

This form applies to facilities located in public right-of-way of unincorporated Adams County or property owned by Adams County.

Project: _____

County Project No.: _____ Location/Intersection: _____

New Construction: Alteration to Existing Facility:

ADA requirement seemingly not being satisfied or creating undue burden: _____

Reason for perceived non-compliance: _____

Reasonable accommodation provided: _____

Sketch of area (if needed) or indicate if attached

County Representative/Title: _____ Date: _____

If you have questions about this form please contact the ADA Coordinator at (720) 523-6116.

APPENDIX J – EXAMPLE SUMMARY OF WORK COMPLETED TOWARDS
TRANSITION PLAN IMPLEMENTATION

CURB RAMPS

Year	# of Curb Ramps (each)

SIDEWALK

Year	Sidewalk (LF)

PEDESTRIAN PUSH BUTTONS

Year	# of Push Buttons (each)